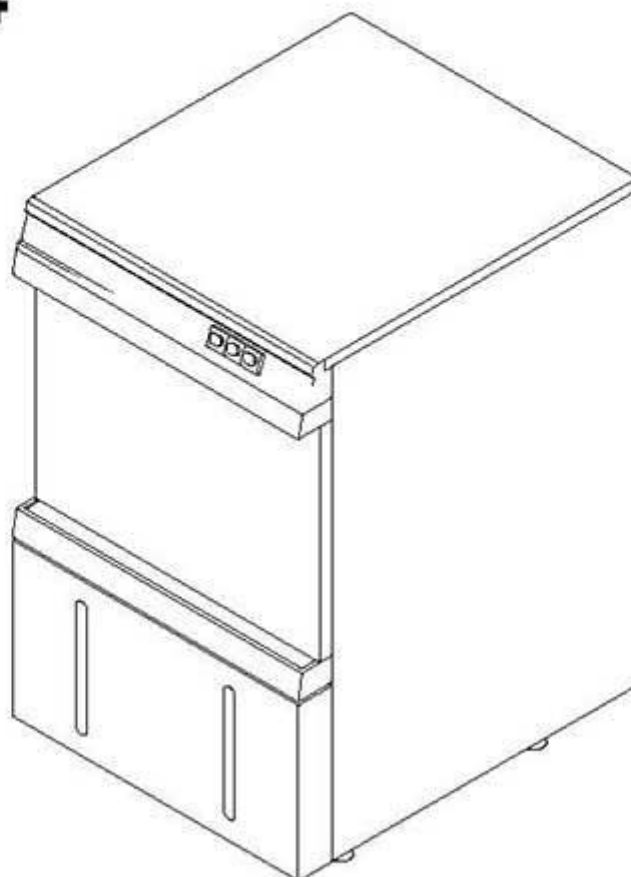


winterhalter

Spare parts list

GS 24



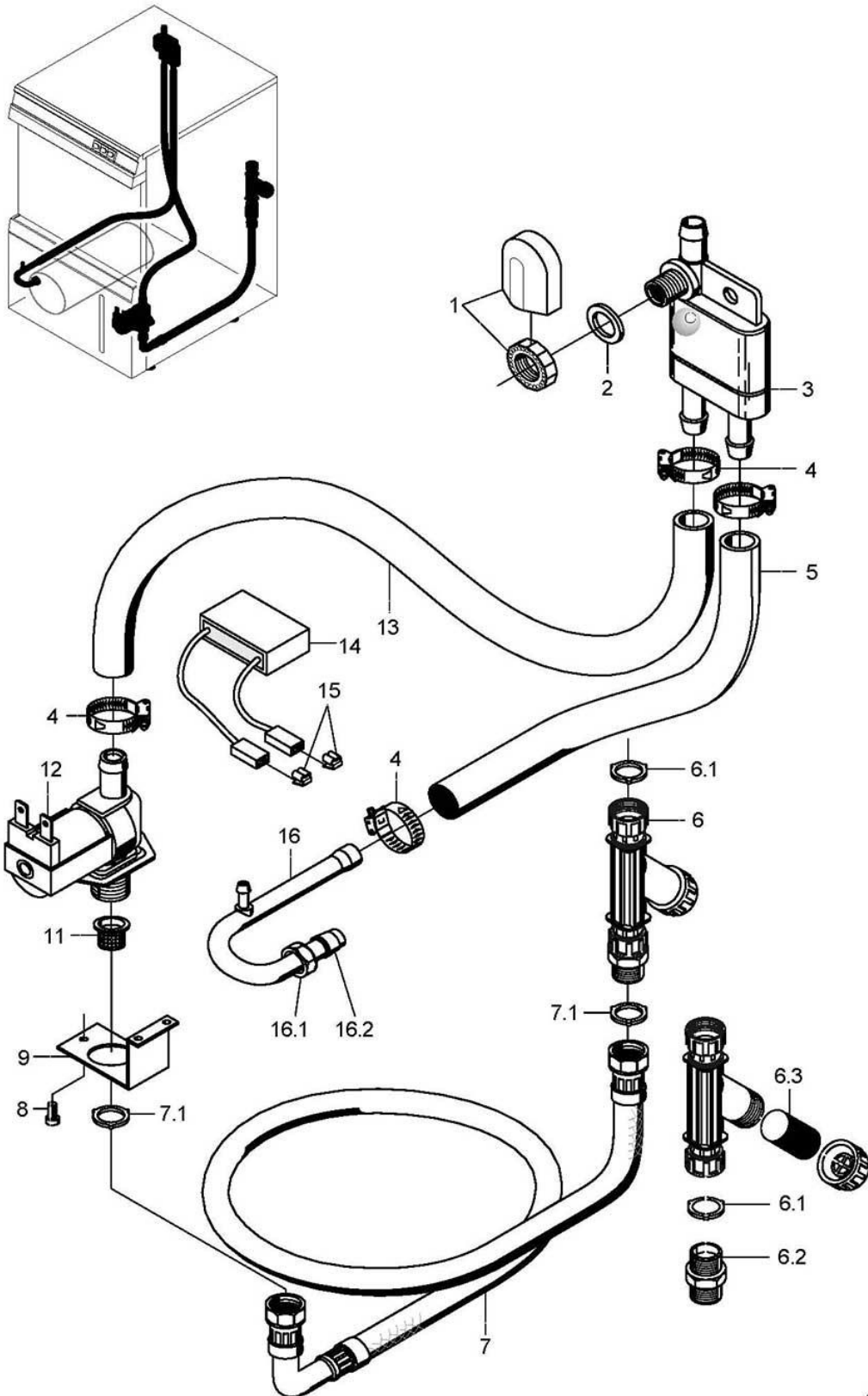
Drawn up: 05/92

Processed: 04.08.09

Parts no.: 89001085

Contents

Water inlet		Page 1 - 2
Water inlet AquaMatik	to machine no.: 353 914	Page 3 - 4
Water inlet (Tundish / AquaMatik)	From machine no.: 353 915	Page 5 - 6
Water drainage and tank heating		Page 7 - 8
Wash system I		Page 9 - 10
Wash system II		Page 11 - 12
Rinsing I		Page 13 - 14
Rinsing II (AquaMatik)	to machine no.: 353 914	Page 15 - 16
Rinsing II (AquaMatik)	From machine no.: 353 915	Page 17 - 18
Rinse III Tundish		Page 19 - 20
Rinsing IV		Page 21 - 22
Rinse V AquaMatik/Tundish		Page 23 - 24
Dosage		Page 25 - 26
Door	to machine no.: 180 734	Page 27 - 28
Door	From machine no.: 180 735	Page 29 - 30
Chassis, container and panelling		Page 31 - 32
Electrical parts I	to machine no.: 215 150	Page 33 - 34
Electrical parts I	From machine no.: 215 151	Page 35 - 36
Electrical parts II	to machine no.: 215 150	Page 37 - 38
Electrical parts II	From machine no.: 215 151	Page 39 - 40
Cold water rinsing		Page 41 - 42
Drain pump (optional)		Page 43 - 44



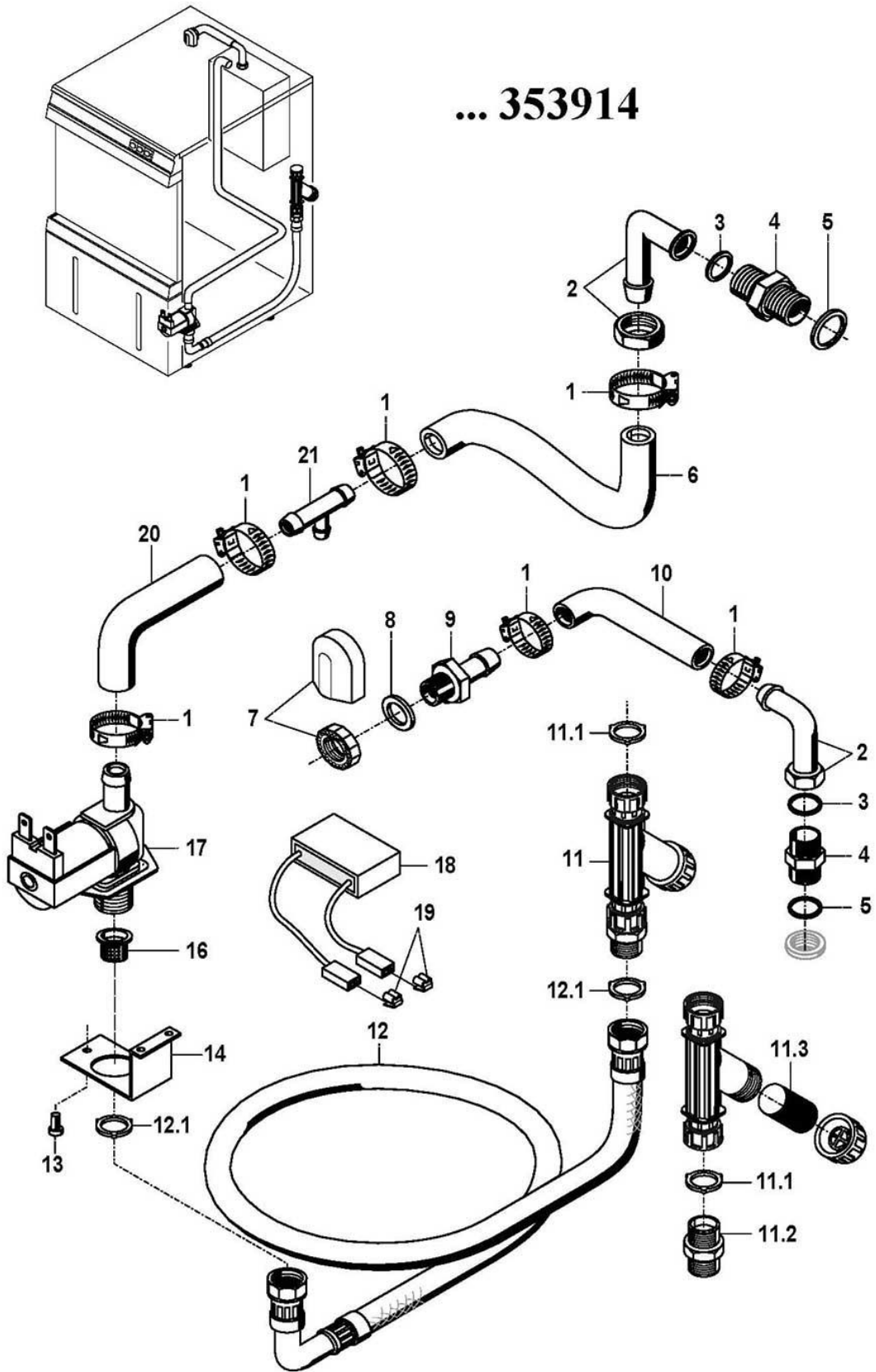
62002847-00

GS 24

Water inlet

Item.	Designation	Parts no.:	Pc.	Notes
1	Tank inlet set	61004545		
2	Gasket; D17 X D24 X 2,0	62001366		
3	Lateral check valve	35 01 194		
4	Hose clamp; D12-22 X 9	28 02 105		
5	Industrial hose; DN13 X 3,5	40 02 035		600 mm; "By-the-metre" goods
6	Dirt trap; 150 µM	80002153		incl. item 6.1 - 6.3
6.1	Gasket; D16 X D24 X 3,0	80002241		
6.2	Double nipple; G 3/4" X 40; SW30	80002167		
6.3	Strainer; D27 X 67 X 150µM	80002728		
7	Metal hose; DN13 X 2000; G3/4"	29 01 321		
7	Metal hose; DN12 X 1500; G 3/4"	29 01 305		Great Britain
7.1	Gasket; D16 X D24 X 3,0	80002241		
8	Cylinder head screw; M4 X 8	20 09 310		
9	Solenoid valve bracket; 2,0 X 42 X 99,5	62001284		
10				replaced by 12
11	Solenoid valve filter	31 06 186		
12	Solenoid valve flow restrictor 15l; 220-240V/50-60HZ	31 06 180		
12	Solenoid valve flow restrictor 15l; 180-220V/50-60HZ	31 06 198		
13	Hose elbow 90°; DN12,5X4,0;45X880	62001434		adapt
14	RC element; 0,15 MICRO F; 3,3 KOHM	31 13 114		only with Aquamatik; parallel to item 12 connect
15	Flat plug; 6,3 X 0,8	31 12 018		only with Aquamatik; parallel to item 12 connect
16	Boiler inlet; 220 LG	62001742		up to mach. no. 204 490 order item 5
16.1	Union nut; G 1/2" X D12,2; SW24	29 07 301		
16.2	Cutting ring; D12 X 10	29 07 300		

... 353914

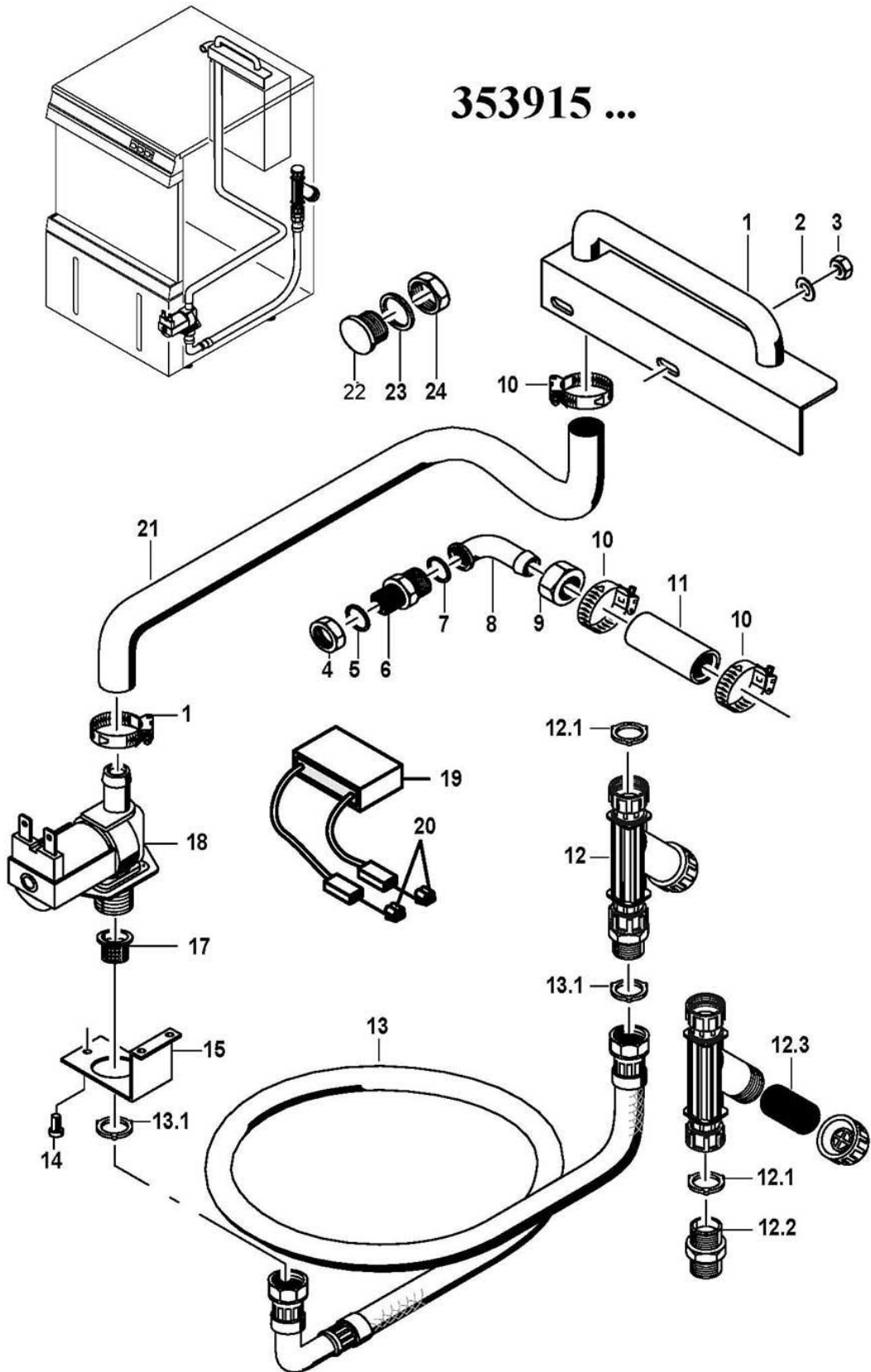


GS 24

Water inlet AquaMatik to machine no.: 353 914

Item.	Designation	Parts no.:	Pc.	Notes
1	Hose clamp; D12-22 X 9	28 02 105		
2	Angle screwing; G 1/2" X G 1/2"	29 06 238		
3	Gasket; D13,3 X D18 X 2,0	27 09 012		
4	Reducing nipple; G 1/2" X G 3/8"; SW24	30 11 302		
5	Gasket; D17 X D24 X 2,0	27 09 009		
6	Hose bend; DN13 X 4,0	40 03 053		adapt
7	Tank inlet set	61004545		
8	Gasket; D17 X D24 X 2,0	62001366		
9	Hose socket; D12,5 X 40; G3/8";SW22	61002776		
10	Hose elbow; DN13,5 X 3,5	62001573		adapt
11	Dirt trap; 150 µM	80002153		incl. item 11.1 - 11.3
11.1	Gasket; D16 X D24 X 3,0	80002241		
11.2	Double nipple; G 3/4" X 40; SW30	80002167		
11.3	Strainer; D27 X 67 X 150µM	80002728		
12	Metal hose; DN13 X 2000; G3/4"	29 01 321		incl. item 12.1
12.1	Gasket; D16 X D24 X 3,0	80002241		
13	Countersunk screw; M4 X 8	20 10 309		
14	Solenoid valve bracket; 2,0 X 42 X 99,5	62001284		
15				replaced by 17
16	Solenoid valve filter	31 06 186		
17	Solenoid valve flow restrictor 15l; 220-240V/50-60HZ	31 06 180		
17	Solenoid valve flow restrictor 15l; 180-220V/50-60HZ	31 06 198		Japan
18	RC element; 0,15 MICRO F; 3,3 KOHM	31 13 114		
19	Flat plug; 6,3 X 0,8	31 12 018		
20	Hose elbow; DN13,5 X 3,5	62001573		adapt
21	T-piece; D6,6 X D14 X D14	35 01 087		

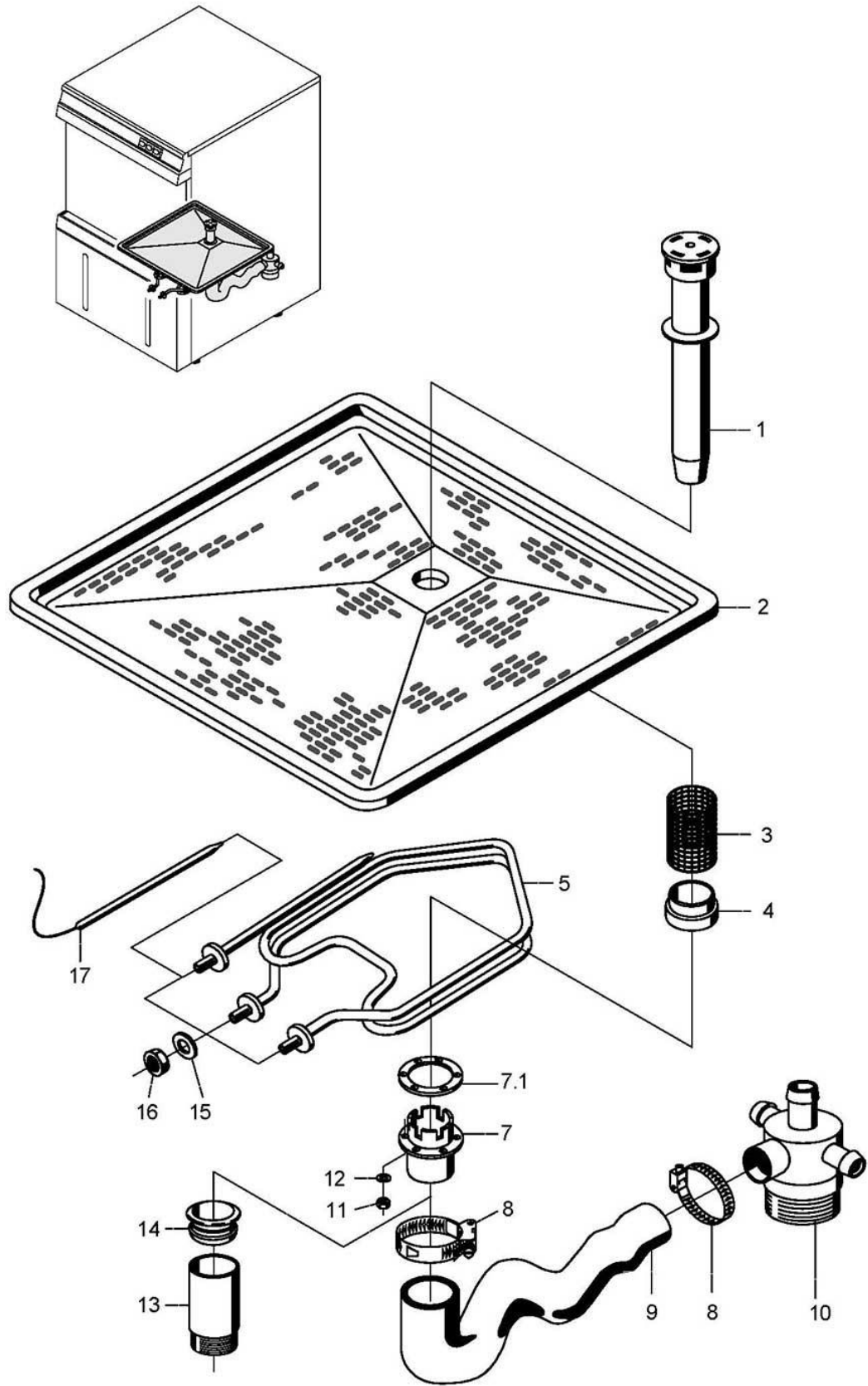
353915 ...



GS 24

Water inlet (Tundish / AquaMatik) From machine no.: 353 915

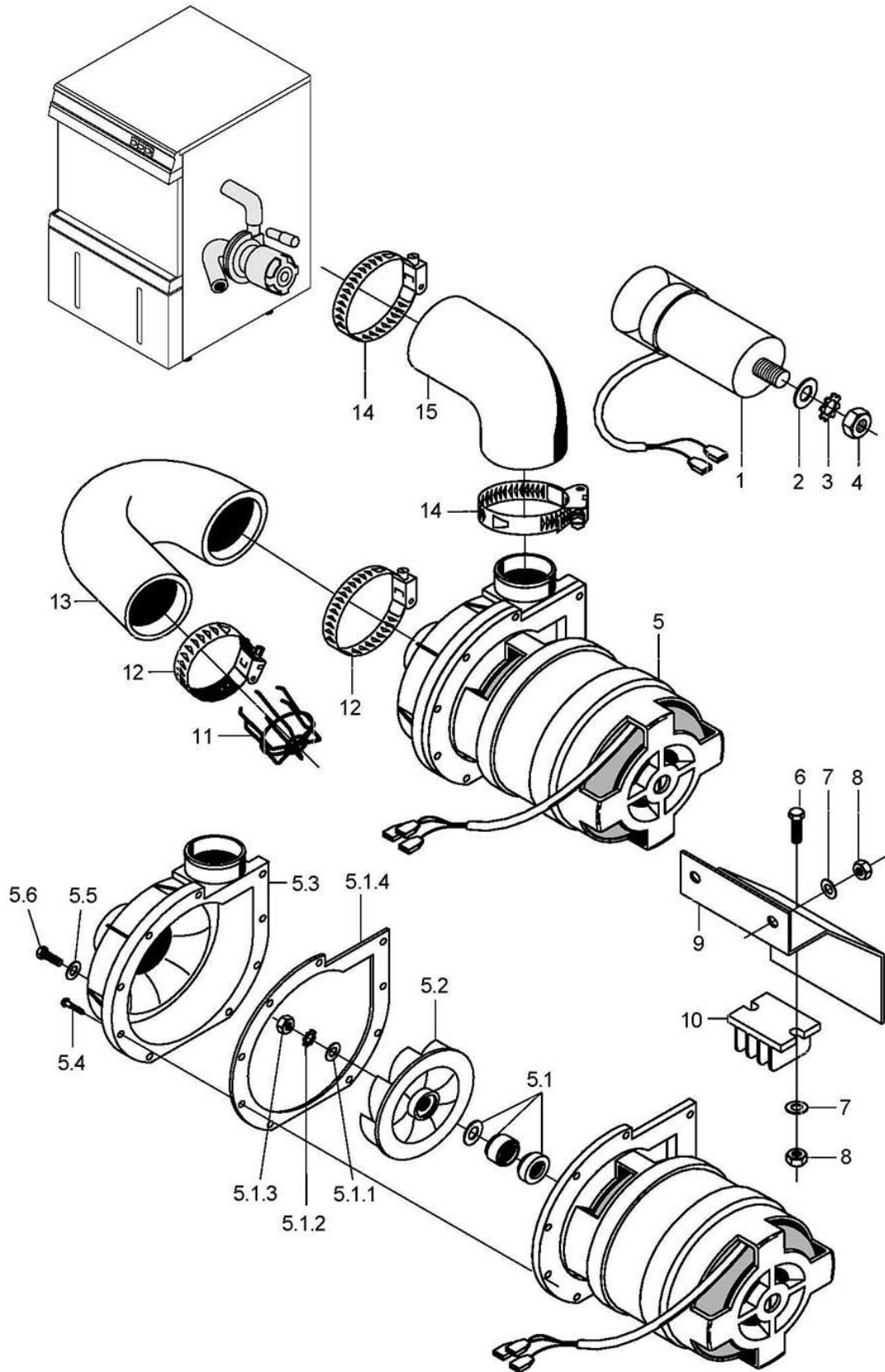
Item.	Designation	Parts no.:	Pc.	Notes
1	Water inlet	62002242		
2	Washer; D5,3 X D10 X 1,0	22 01 300		
3	Hexagonal nut; M5 SELBSTSICHERND	21 05 302		
4	Hexagonal nut; G 1/2" X 8,0; SW27	30 09 201		
5	Gasket; D19,5 X D24 X 1,5	27 09 010		
6	Mediamat connection nipple; G 1/2" X G 3/4" X 32	30 11 502		
7	Gasket; D22 X D30 X 1,5	27 09 015		
8	Mediamat connection elbow; D17; 90GRAD	29 06 524		
9	Union nut; G 3/4" X D20,5; SW30	29 07 203		
10	Hose clamp; D12-22 X 9	28 02 105		
11	Industrial hose; DN13 X 3,5	40 02 035		60 mm; "By-the-metre" goods
12	Dirt trap; 150 µM	80002153		incl. item 12.1 - 12.3
12.1	Gasket; D16 X D24 X 3,0	80002241		
12.2	Double nipple; G 3/4" X 40; SW30	80002167		
12.3	Strainer; D27 X 67 X 150µM	80002728		
13	Metal hose; DN13 X 2000; G3/4"	29 01 321		
13	Metal hose; DN12 X 1500; G 3/4"	29 01 305		Great Britain
13.1	Gasket; D16 X D24 X 3,0	80002241		
14	Countersunk screw; M4 X 8	20 10 309		
15	Solenoid valve bracket; 2,0 X 42 X 99,5	62001284		
16				replaced by 18
17	Solenoid valve filter	31 06 186		
18	Solenoid valve flow restrictor 15l; 220-240V/50-60HZ	31 06 180		
18	Solenoid valve flow restrictor 5l; 220-240V/50-60HZ	31 06 184		
18	Solenoid valve flow restrictor 15l; 180-220V/50-60HZ	31 06 198		Japan
19	RC element; 0,15 MICRO F; 3,3 KOHM	31 13 114		
20	Flat plug; 6,3 X 0,8	31 12 018		
21	Hose elbow; DN12,5 X 4,0	40 03 051		adapt
21	Industrial hose; DN13 X 3,5	40 02 035		Great Britain
22	Blind plug	62001582		
23	Gasket; D17 X D24 X 2,0	27 09 009		
24	Hexagonal nut; G 3/8" X 5,5; SW22	30 09 200		



GS 24

Water drainage and tank heating

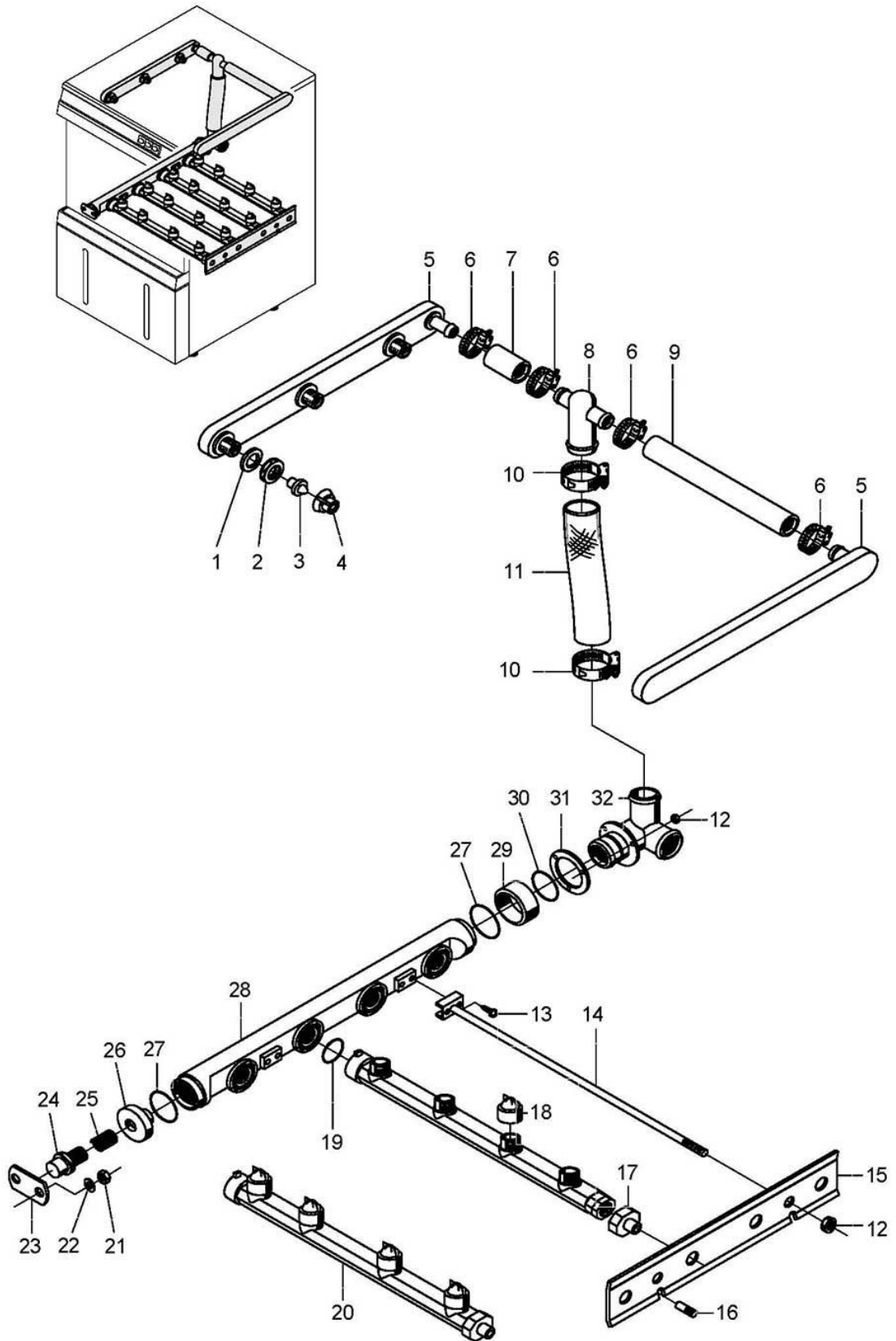
Item.	Designation	Parts no.:	Pc.	Notes
1	Standpipe; ÜBERLAUFHÖHE 131	62001147		
1	Stand pipe; ÜBERLAUFHÖHE 131	80001537		
2	Flat filter; 31 X 300 X 334	62001214		
3	Stand pipe filter; D59 X D53 X 50	62001501		
4	Receiver for standpipe filter; D58 X 20	62001500		
5	Heating element 2,8kw, 230V/1	31 03 119		
5	Heating element 2,8kw, 400V/1	31 03 121		
5	Heating element 2,6kw, 240V/1	31 03 117		
5	Heating element 2,8 kW; 420V/1	31 03 122		
5	Heating element 2,8kw, 200V/1	31 03 118		
7	Set stand pipe bottom part GS 24; D86 X 50, DN40	62003153		incl. item 7.1
7.1	Gasket; D52 X D83,5 X 2,0	62001749		6 bores
7.1	Gasket; D52 X D80 X 2,0	62001335		4 bores
8	Hose clamp; D32-52 X 12	28 02 110		
9	Syphon; DN38 X 6	62001413		
10	Mediamat drain; G 1 1/2"; D40	35 01 080		
11	Hexagonal nut; M5 SELBSTSICHERND	21 05 302		
12	Washer; D5,3 X D10 X 1,0	22 01 300		
13	Drain adapter; D50 X G1 1/2" X 100	62001497		
14	Gasket; D45 X 23	27 01 027		
15	Gasket; D10 X D18 X 1,5	27 09 013		
16	Hexagonal nut; M10 X 1,0 X 5,0; SW14	62001401		
17	Safety thermostat; 160 GRAD C -12K "AUS"	31 25 030		



GS 24

Wash system I

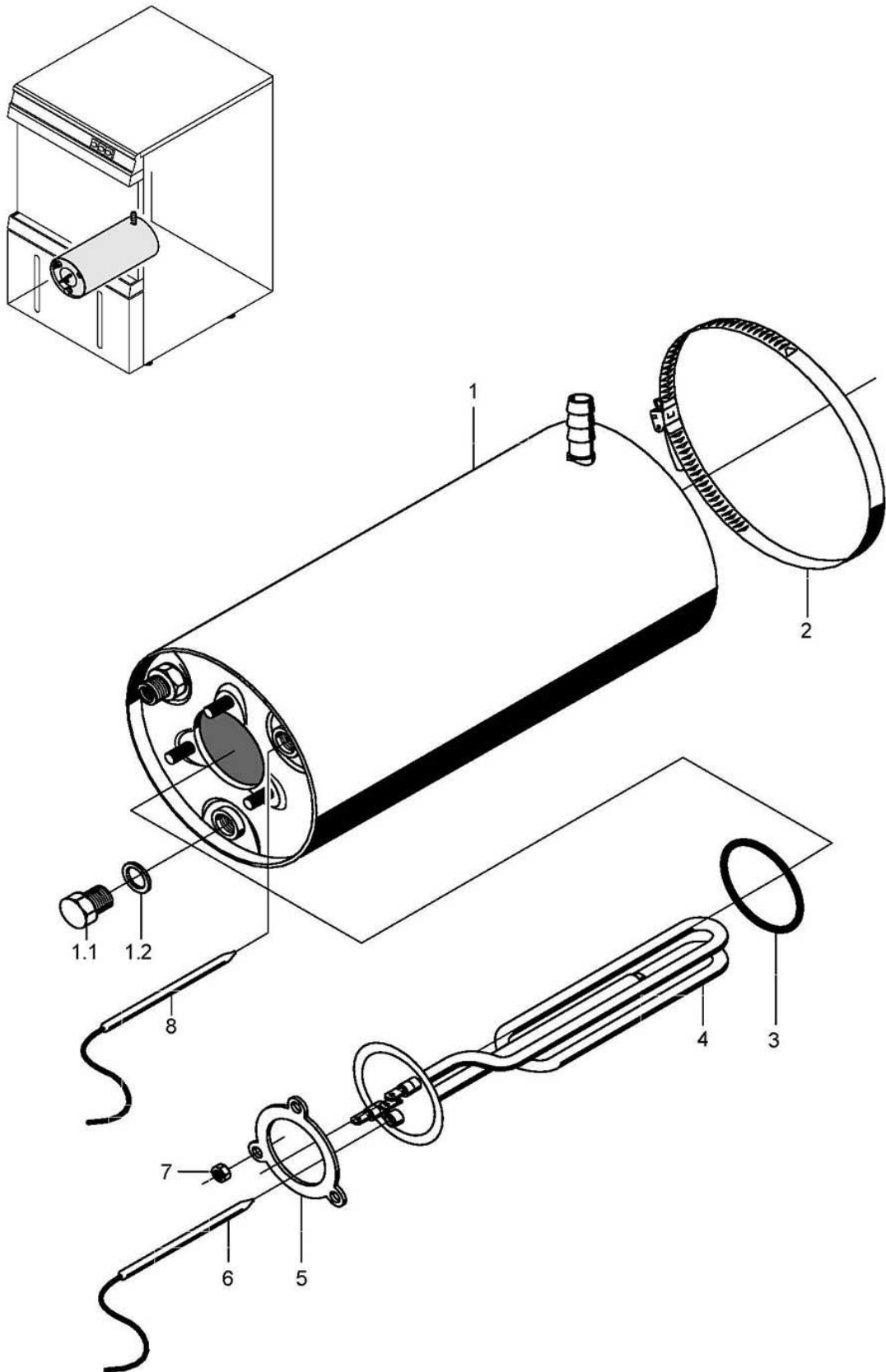
Item.	Designation	Parts no.:	Pc.	Notes
1	Capacitor; 12,5 MIKRO F	31 13 028		
2	Washer; D8,4 X D17 X 1,6	22 01 303		
3	Spring washer; B8	23 03 301		
4	Hexagonal nut; M8	21 01 305		
5	Pump 0,37 kw 6/0; 220V/240V/1/50HZ	31 02 260		
5	Pump 0,37 kw 6/0; 200V/1/50HZ	31 02 324		
5	Pump 0,37 kw 6/0; 200V/1/60HZ	31 02 325		
5	Pump 0,37kw 6/0; 220V/1/60HZ	31 02 266		
5.1.1	Washer; D6,4 X D12,5 X 1,6	22 01 302		
5.1.2	Spring washer; B6	23 03 300		
5.1.3	Hexagonal nut; M6 LH	21 01 309		Left-hand thread
5.1.4	Pump housing gasket	31 02 203		
5.2	Impeller; D85	31 02 275		50 Hz
5.2	Impeller; D80	31 02 321		60 Hz
5.3	Pump housing	31 02 200		
5.4	Sheet metal screw; ST 3,9 X 19	20 22 302		
5.1	Sealing kit; 0,73/0,55/0,37 KW	80002673		
5.5	Gasket; M8	22 08 505		
5.6	Hexagon screw; M8 X 16; A70	20 01 302		
6	Pan head screw; M4 X 16	20 10 213		
7	Washer; D4,3 X D8 X 0,5	22 02 202		
8	Hexagonal nut; M4 SELBSTSICHERND	21 05 300		
9	Pump cover; 1,0 X 115 X 167	62001540		
10	Distribution bar; 3-POLIG	31 09 011		
11	Suction sieve; D42 X 41 X D1,5	62001337		
12	Hose clamp; D47-67 X 12	28 02 115		
13	Hose elbow; DN42 X 7,0	62001170		
14	Hose clamp; D32-52 X 12	28 02 110		
15	Hose elbow 90°; DN40X6,0;100X190	62001171		



GS 24

Wash system II

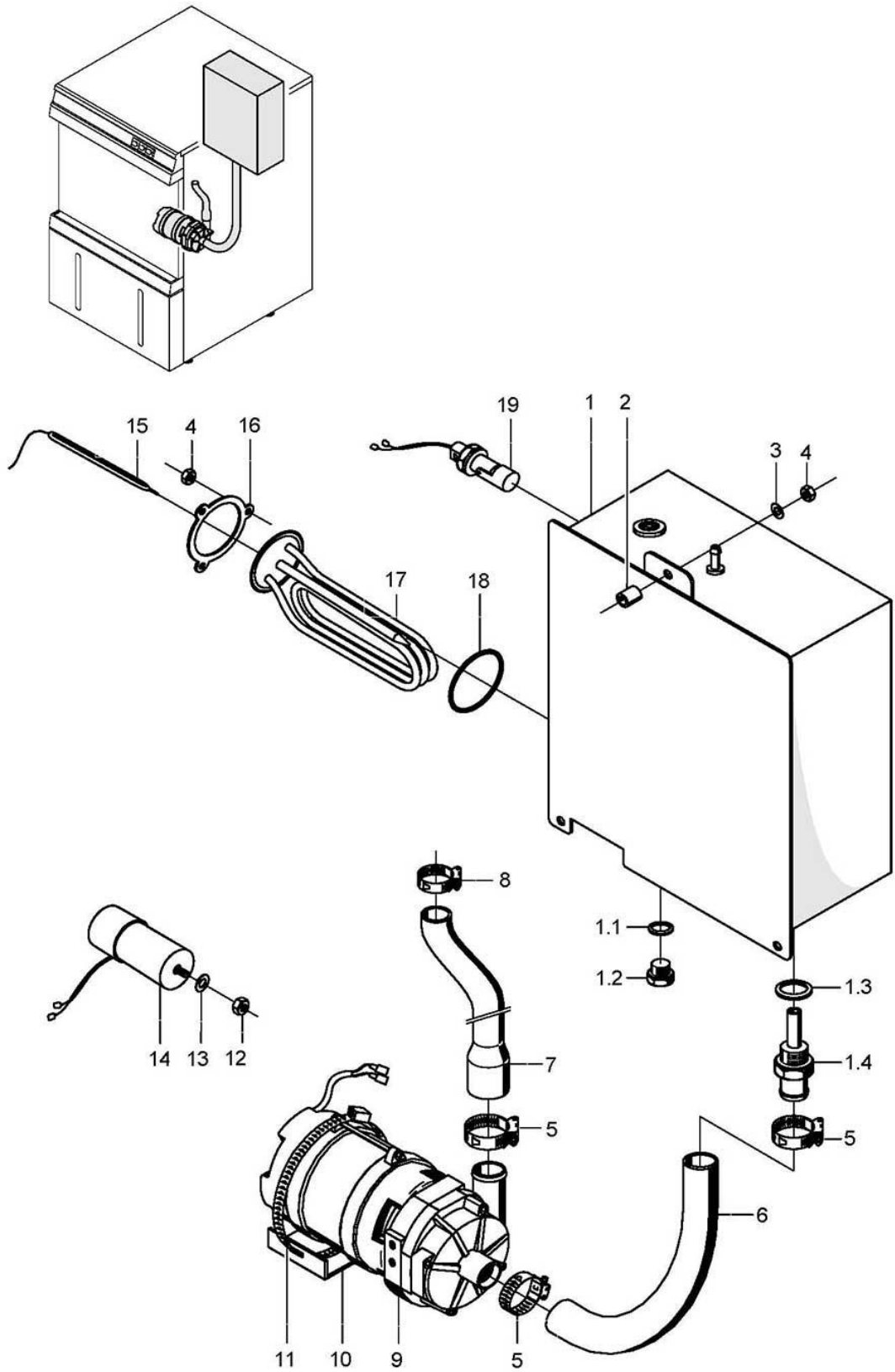
Item.	Designation	Parts no.:	Pc.	Notes
1	Gasket; D17 X D24 X 2,0	62001366		
2	Hexagonal nut; G 3/8" X 5,5; SW22	30 09 200		
3	Slotted jet; D14,5 X 17	62001173		
4	Union nut; G 3/8"; D34 X 15	62001174		
5	Top wash manifold; 415	62001172		
6	Hose clamp; D12-22 X 9	28 02 105		
7	Reinforced hose; DN13,2 X 3,3	40 01 030		130 mm; "By-the-metre" goods
7	Reinforced hose; DN13,2 X 3,3	40 01 030		Pressure-independent boiler 50 mm "By-the-metre" goods
8	T-piece; D25 X D14,5 X 14,5	62001329		
9	Reinforced hose; DN13,2 X 3,3	40 01 030		Pressure-independent boiler 355 mm; "By-the-metre" goods
9	Reinforced hose; DN13,2 X 3,3	40 01 030		275 mm; "By-the-metre" goods
10	Hose clamp; D24-36 X 12	28 02 111		
11	Reinforced hose; DN25,4 X 4,4	40 01 023		360 mm; "By-the-metre" goods
11	Reinforced hose; DN25,4 X 4,4	40 01 023		Pressure-independent boiler 330 mm; "By-the-metre" goods
12	Hexagonal nut; M5 SELBSTSICHERND	21 05 302		
13	Plate screw; ST 3,9 X 9,5	20 20 307		
14	Rod support	62001368		
15	Arm support plate; 1,5 X 48 X 320	62001333		
16	Bolt; D6 X 37	62001239		to machine no.: 351 837
17	End piece; D30 X D25 X 46	62001152		
18	Cross recession jet; G 1/2"	62001153		
19	O-ring; 18 X 1,5	27 07 039		
20	Wash arm cpl.; 4 DÜSEN; 336 LG	62001150		
21	Hexagonal nut; M4 SELBSTSICHERND	21 05 300		
22	Washer; D4,3 X D8 X 0,5	22 02 302		
23	Manifold bearing plate; D40 X 9	62001354		
24	Bearing bolt; SW14 X 33; M10	62001355		
25	Pressure spring; 35 X D7,5 X D0,8	28 04 006		
26	Manifold end pice; D58 X D63 X 20	62001156		
27	O-ring; 42 X 2,5	27 07 035		
28	Manifold central part; D52 X 415	62001154		
29	Manifold retainer; D58 X 20	62001155		
30	O-ring; 36 X 2	27 07 052		
31	Gasket; D41 X D73,5 X 2,0	62001336		
32	Manifold cross; DN40 X DN25	62001157		



GS 24

Rinsing I

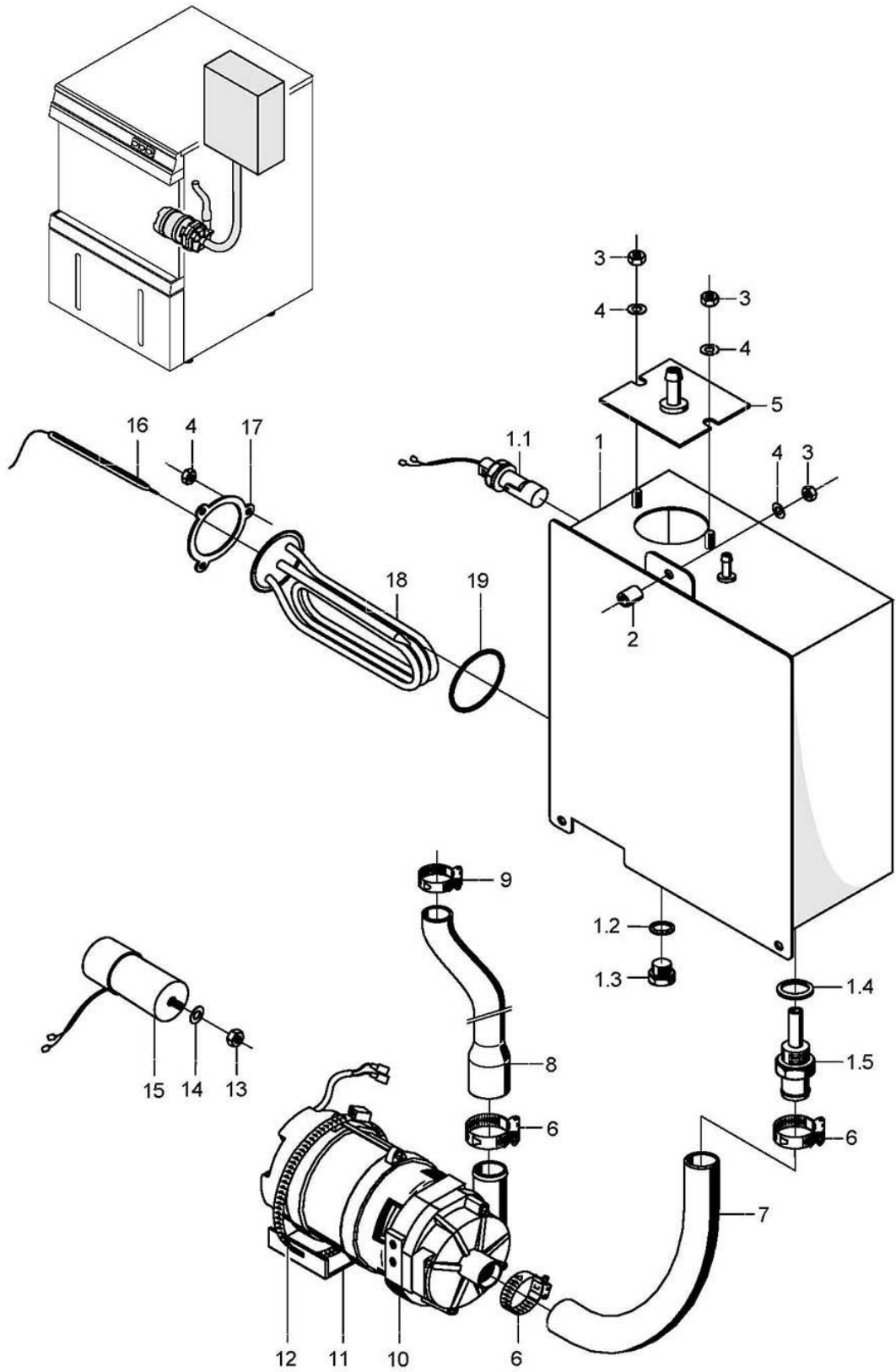
Item.	Designation	Parts no.:	Pc.	Notes
1	Boiler compl.	62001215		incl. item 1.1 - 1.2
1.1	Hexagon screw, M10 X 16; A70	20 01 352		
1.2	Gasket; D10 X D18 X 1,5	27 03 003		
2	Hose clamp; D50-145 X 12	28 02 008		
3	O-ring; 43 X 7,0	27 07 088		
4	Heating element cranked 5,0kW; 230V/400V/3	31 03 030		
4	Heating element cranked 5,0kW; 240V/420V/3	31 03 032		
4	Heating element cranked 5,0kW; 200V/346V/3	31 03 098		
4	Heating element cranked 2,8kW; 230V/1	31 03 084		
4	Heating element cranked 2,8kW; 240V/1	31 03 033		
4	Heating element cranked 2,8kW; 200V/1	31 03 109		
4	Heating element cranked 2,8kW; 400V/1	31 03 039		
4	Heating element cranked 2,6kW; 240V/1	31 03 111		
4	Heating element cranked 2,2kW; 230V/1	31 03 082		
5	Locking washer; D43 X D80 X 4,0	01 17 003		
6	Safety thermostat; 160 GRAD C -12K "AUS"	31 25 030		
7	Hexagonal nut; M5	21 01 303		
8	Thermostat; 1750 LG; 220V	31 25 031		



GS 24

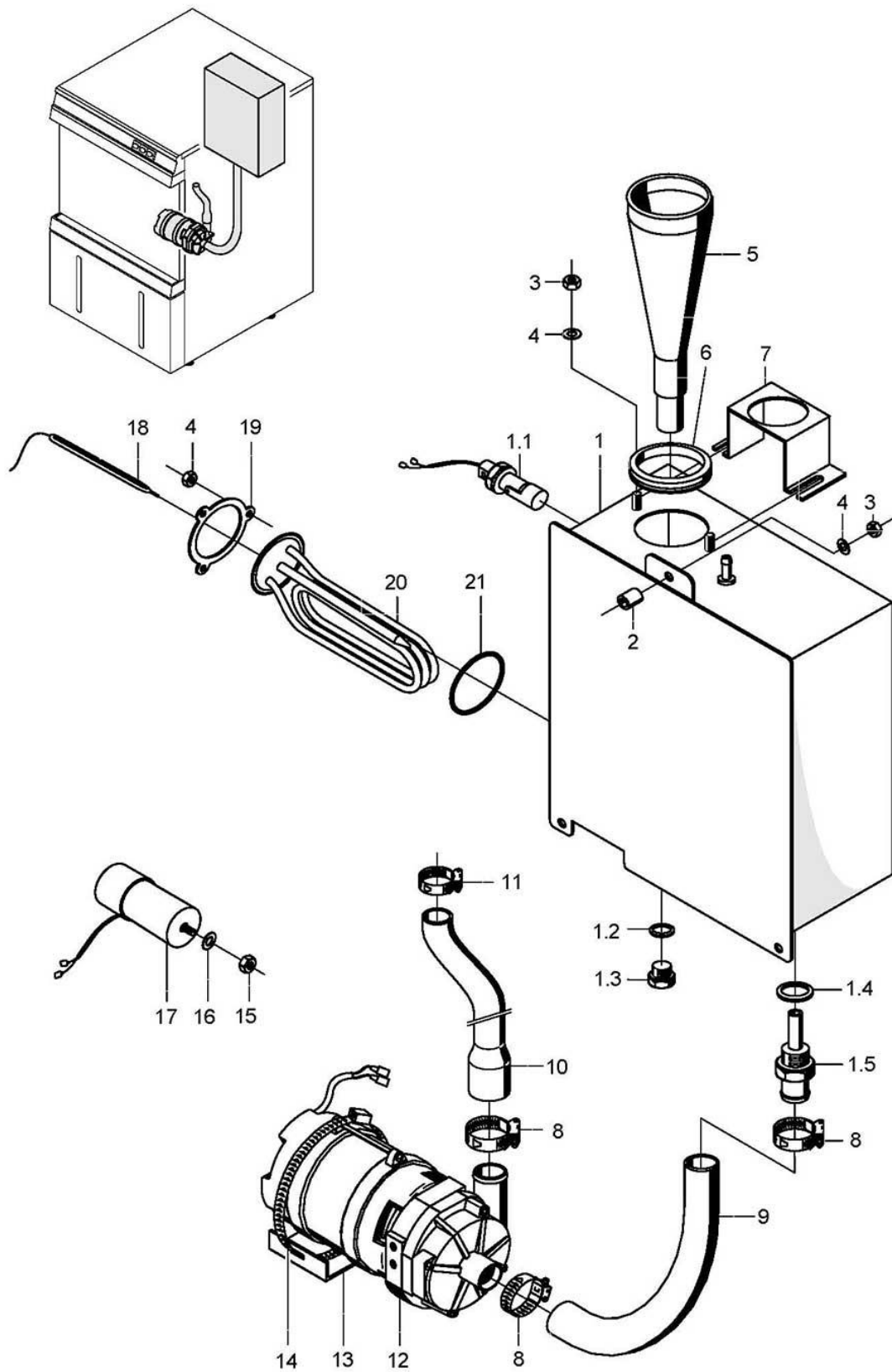
Rinsing II (AquaMatik) to machine no.: 353 914

Item.	Designation	Parts no.:	Pc.	Notes
1	Pressureless boiler	62002098		incl. item 1.1 - 1.4
1.1	Gasket; D10 X D18 X 1,5	27 03 003		
1.2	Hexagon screw, M10 X 16; A70	20 01 352		
1.3	Gasket; D21 X D28 X 2,0	27 09 011		
1.4	Dip pipe	62002086		
2	Spacer; D5,3 X D12 X 7	22 08 513		
3	Washer; D5,3 X D10 X 1,0	22 01 300		
4	Hexagonal nut; M5 SELBSTSICHERND	21 05 302		
5	Hose clamp; D24-44 X 12	28 02 309		
6	Reinforced hose; DN25 X 4,5	40 01 038		305 mm; "By-the-metre" goods
7	Reducing hose; DN13 X DN25; 720	60001606		adapt
8	Hose clamp; D12-22 X 9	28 02 105		
9	Pump 0.270 kW 8/0; 220/240V/1/50HZ	31 02 477		
9	Pump 0.270 kW 8/0; 220/240V/1/60HZ	31 02 445		
9	Pump 0.270 kW 8/0; 200V/1/50HZ	31 02 446		
9	Pump 0.270 kW 8/0; 200V/1/60HZ	31 02 447		
10	Pump bracket; 2,0 X 60 X 124	80001405		
10	Bracket; 2,0 X 47 X 147,51	80003026		for HANNING-pump
11	Hose clamp; D92-112 X 12	28 02 125		
12	Hexagonal nut; M8	21 01 305		
13	Spring washer; B8	23 03 301		
14	Capacitor; 5 MIKRO F	31 13 099		
15	Safety thermostat; 160 GRAD C -12K "AUS"	31 25 030		
16	Locking washer; D43 X D80 X 4,0	01 17 003		
17	Heating element cranked 5,0kW; 230V/400V/3	31 03 030		
17	Heating element cranked 5,0kW; 240V/420V/3	31 03 032		
17	Heating element cranked 5,0kW; 200V/346V/3	31 03 098		
17	Heating element cranked 2,8kW; 230V/1	31 03 084		
17	Heating element cranked 2,8kW; 240V/1	31 03 033		
17	Heating element cranked 2,8kW; 200V/1	31 03 109		
17	Heating element cranked 2,8kW; 400V/1	31 03 039		
17	Heating element cranked 2,6kW; 240V/1	31 03 111		
17	Heating element cranked 2,2kW; 230V/1	31 03 082		
18	O-ring; 43 X 7,0	27 07 088		
19	Floating switch installation set	55 28 255		
19	Rubber seal; D27 X D20 X 14	31 26 036		
o.P.	Baffle plate; 0,8 X 110 X 139	62002097		



GS 24**Rinsing II (AquaMatik) From machine no.: 353 915**

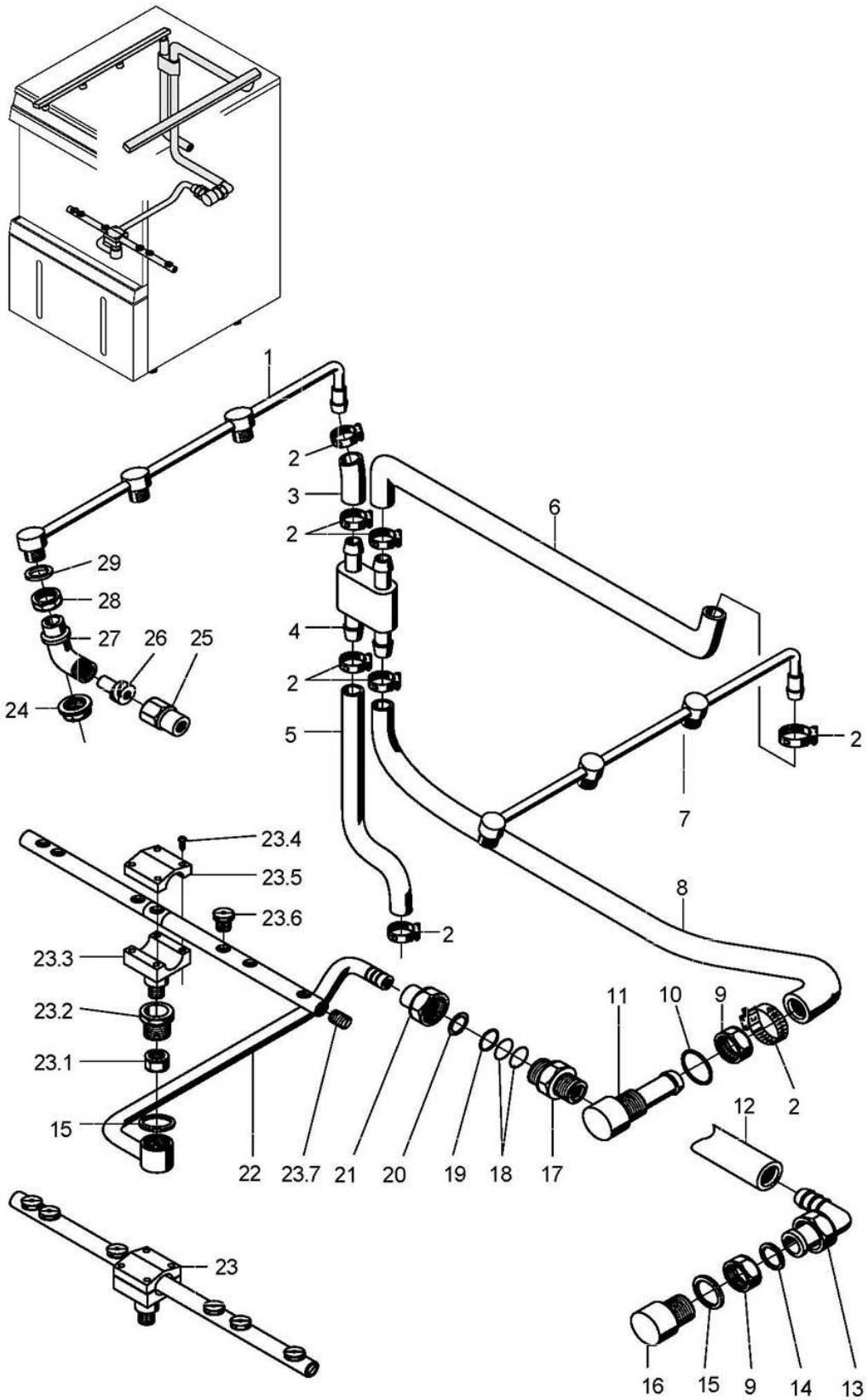
Item.	Designation	Parts no.:	Pc.	Notes
1	Pressureless boiler	80002126		incl. item 1.1 - 1.5
1.1	Floating switch installation set	55 28 255		
1.1	Rubber seal; D27 X D20 X 14	31 26 036		
1.2	Gasket; D10 X D18 X 1,5	27 03 003		
1.3	Hexagon screw; M10 X 16; A70	20 01 352		
1.4	Gasket; D21 X D28 X 2,0	27 09 011		
1.5	Dip pipe	62002086		
2	Spacer; D5,3 X D12 X 7	22 08 513		
3	Washer; D5,3 X D10 X 1,0	22 01 300		
4	Hexagonal nut; M5 SELBSTSICHERND	21 05 302		
5	Adapter; 1,5 X 82 X 90	62002766		
6	Hose clamp; D24-44 X 12	28 02 309		
7	Reinforced hose; DN25 X 4,5	40 01 038		305 mm; "By-the-metre" goods
8	Reducing hose; DN13 X DN25; 720	60001606		adapt
9	Hose clamp; D12-22 X 9	28 02 105		
10	Pump 0.270 kW 8/0; 220/240V/1/50HZ	31 02 477		
10	Pump 0.270 kW 8/0; 220/240V/1/60HZ	31 02 445		
10	Pump 0.270 kW 8/0; 200V/1/50HZ	31 02 446		
10	Pump 0.270 kW 8/0; 200V/1/60HZ	31 02 447		
11	Pump bracket; 2,0 X 60 X 124	80001405		
11	Bracket; 2,0 X 47 X 147,51	80003026		for HANNING-pump
12	Hose clamp; D92-112 X 12	28 02 125		
13	Hexagonal nut; M8	21 01 305		
14	Spring washer; B8	23 03 301		
15	Capacitor; 5 MIKRO F	31 13 099		
16	Safety thermostat; 160 GRAD C -12K "AUS"	31 25 030		
17	Locking washer; D43 X D80 X 4,0	01 17 003		
18	Heating element cranked 5,0kW; 230V/400V/3	31 03 030		
18	Heating element cranked 5,0kW; 240V/420V/3	31 03 032		
18	Heating element cranked 5,0kW; 200V/346V/3	31 03 098		
18	Heating element cranked 2,8kW; 230V/1	31 03 084		
18	Heating element cranked 2,8kW; 240V/1	31 03 033		
18	Heating element cranked 2,8kW; 200V/1	31 03 109		
18	Heating element cranked 2,8kW; 400V/1	31 03 039		
18	Heating element cranked 2,6kW; 240V/1	31 03 111		
18	Heating element cranked 2,2kW; 230V/1	31 03 082		
19	O-ring; 43 X 7,0	27 07 088		
o.P.	Baffle plate; 0,8 X 110 X 139	62002097		



GS 24

Rinse III Tundish

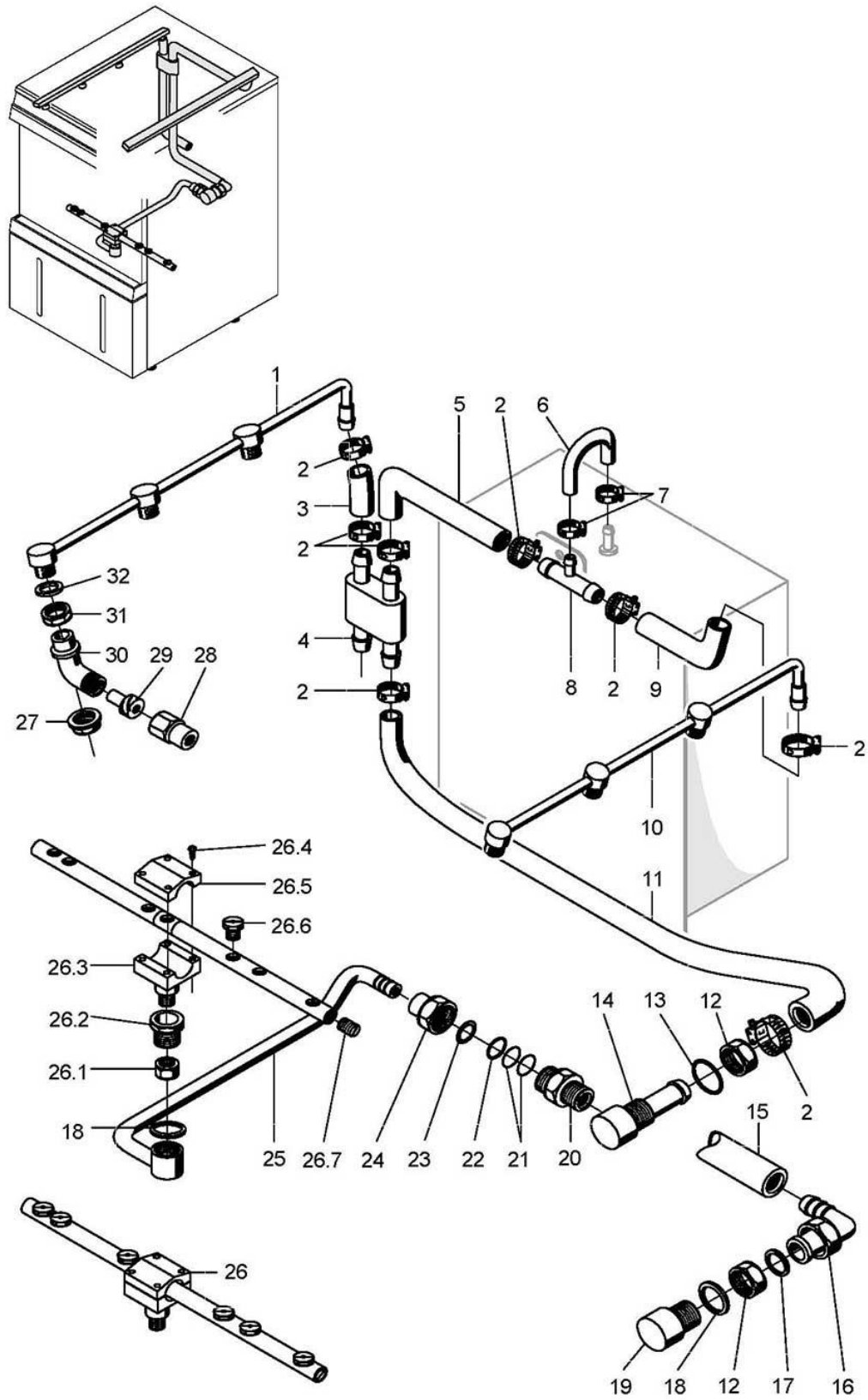
Item.	Designation	Parts no.:	Pc.	Notes
1	Pressureless boiler	80002126		incl. item 1.1 - 1.5
1.1	Floating switch installation set	55 28 255		
1.1	Rubber seal; D27 X D20 X 14	31 26 036		
1.2	Gasket; D10 X D18 X 1,5	27 03 003		
1.3	Hexagon screw, M10 X 16; A70	20 01 352		
1.4	Gasket; D21 X D28 X 2,0	27 09 011		
1.5	Dip pipe	62002086		
2	Spacer; D5,3 X D12 X 7	22 08 513		
3	Hexagonal nut; M5 SELBSTSICHERND	21 05 302		
4	Washer; D5,3 X D10 X 1,0	22 01 300		
5	Inlet funnel; D56,5 X 100	62002154		
6	Sleeve; 35 X 60 X 10	40 07 014		
7	Bracket; 1,5 X 60 X 164,5	62002243		
8	Hose clamp; D24-44 X 12	28 02 309		
9	Reinforced hose; DN25 X 4,5	40 01 038		305 mm; "By-the-metre" goods
10	Reducing hose; DN13 X DN25; 720	60001606		adapt
11	Hose clamp; D12-22 X 9	28 02 105		
12	Pump 0.270 kW 8/0; 220/240V/1/60HZ	31 02 445		
12	Pump 0.270 kW 8/0; 220/240V/1/50HZ	31 02 477		
13	Pump bracket; 2,0 X 60 X 124	80001405		
13	Bracket; 2,0 X 47 X 147,51	80003026		for HANNING-pump
14	Hose clamp; D92-112 X 12	28 02 125		
15	Hexagonal nut; M8	21 01 305		
16	Spring washer; B8	23 03 301		
17	Capacitor; 5 MIKRO F	31 13 099		
18	Safety thermostat; 160 GRAD C -12K "AUS"	31 25 030		
19	Locking washer; D43 X D80 X 4,0	01 17 003		
20	Heating element cranked 5,0kW; 240V/420V/3	31 03 032		
20	Heating element cranked 2,6kW; 240V/1	31 03 111		
21	O-ring; 43 X 7,0	27 07 088		
o.P.	Baffle plate; 0,8 X 110 X 139	62002097		



GS 24

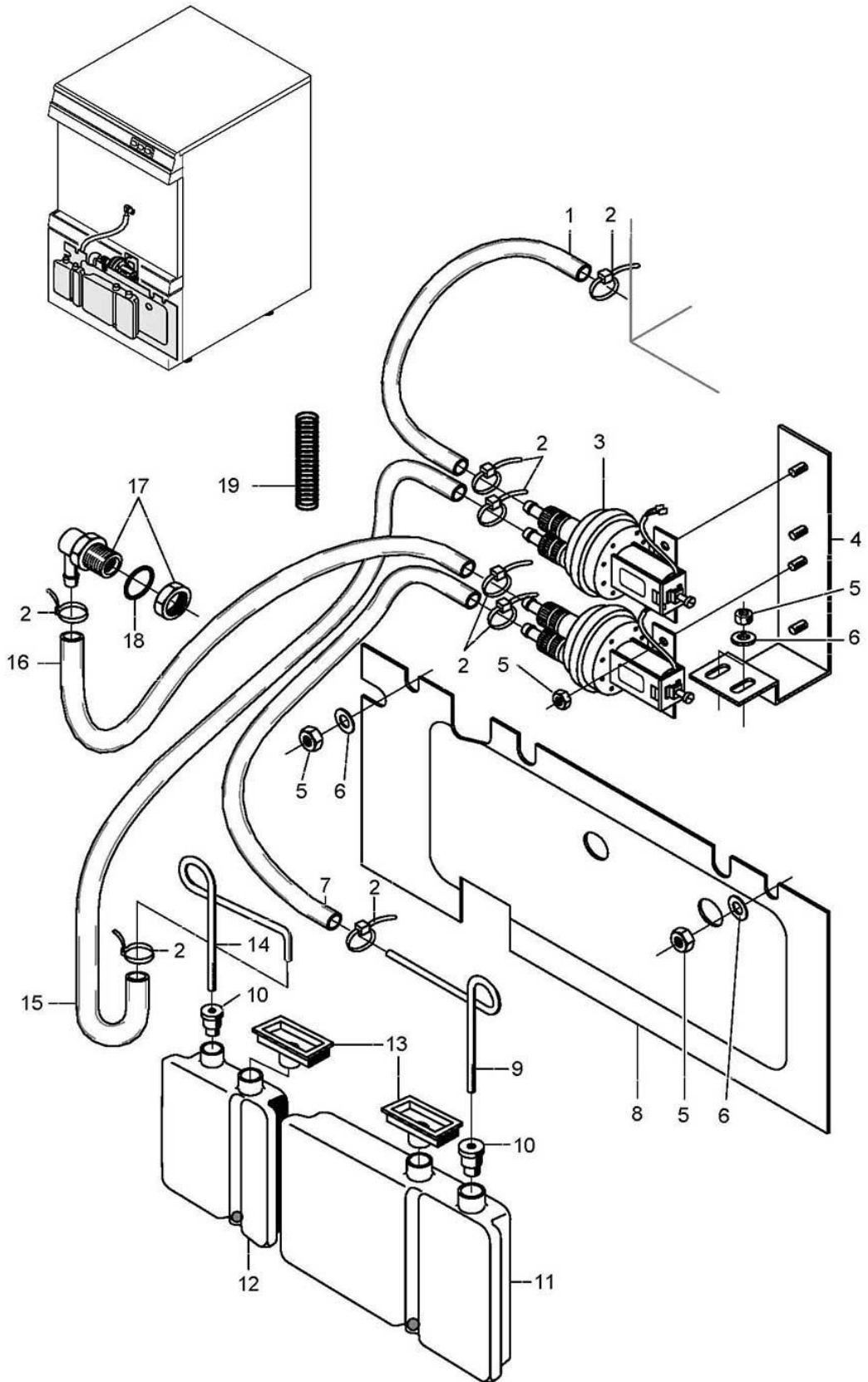
Rinsing IV

Item.	Designation	Parts no.:	Pc.	Notes
1	Rinse manifold left	62002644		
2	Hose clamp; D12-22 X 9	28 02 105		
3	Industrial hose; DN13 X 3,5	40 02 035		to machine no.: 366 337 "By-the-metre" goods 130 mm;
3	Industrial hose; DN13 X 3,5	40 02 035		From machine no.: 366 338 "By-the-metre" goods 210 mm;
4	Distributor for rinse manifold	62001391		
5	Industrial hose; DN13 X 3,5	40 02 035		From machine no.: 366 338 "By-the-metre" goods 280 mm;
5	Industrial hose; DN13 X 3,5	40 02 035		to machine no.: 366 337 "By-the-metre" goods 360 mm;
6	Industrial hose; DN13 X 3,5	40 02 035		From machine no.: 366 338 "By-the-metre" goods 470 mm;
6	Hose elbow, DN13,5 X 3,5	62001573		to machine no.: 366 337
7	Rinse manifold right	62002642		
8	Hose elbow; DN13,5 X 3,5	62001573		adapt
9	Hexagonal nut; G 1/2" X 8,0; SW27	30 09 201		
10	O-ring; 20 X 3,5	27 07 040		
11	Rinse connection	62002831		From machine no.: 340 901 Spare for item 13-16
12	Industrial hose; DN13 X 3,5	40 02 035		to machine no.: 340 900
13				replaced by 8, 11
14				replaced by 8, 11
15	Gasket; D21 X D28 X 2,0	27 09 011		
16				replaced by 8, 11
17	Double nipple; G 3/8" X 26; SW17	62001484		
18	O-ring; 8 X 1,0	27 07 048		
19	O-ring; 7 X 2,5	27 07 013		
20	Washer; D12 X D14,7 X 1,5	62001658		
21	Coupling nut; G 3/8"; SW22	62001485		
22	Stay pipe f/revolving arm cpl.	62001539		
23	Revolving arm	62001158		incl. item 23.1 - 23.7
23.1	Hexagonal nut; M10 X 1,0 X 5,0; SW14	62001401		
23.2	Revolving arm bearing; G 1/2" X 17,3	62001486		
23.3	Revolving arm bottom part	62001159		
23.4	Sheet metal screw; ST 2,9 X 13	20 20 302		
23.5	Revolving arm upper part	62001160		
23.6	Flat jet nozzle; 1/16 NPT; SW10	29 10 312		
23.7	T threaded stud; M9 X 6	29 10 238		
24	Union nut; G 3/8"; D34 X 15	62001174		
25	Rinse jet cap	65002754		
26	Spray jet swirl	65002755		
27	Rinse jet adapter	62001176		
28	Hexagonal nut; G 3/8" X 5,5; SW22	30 09 200		
29	Gasket; D17 X D24 X 2,0	62001366		



GS 24**Rinse V AquaMatik/Tundish**

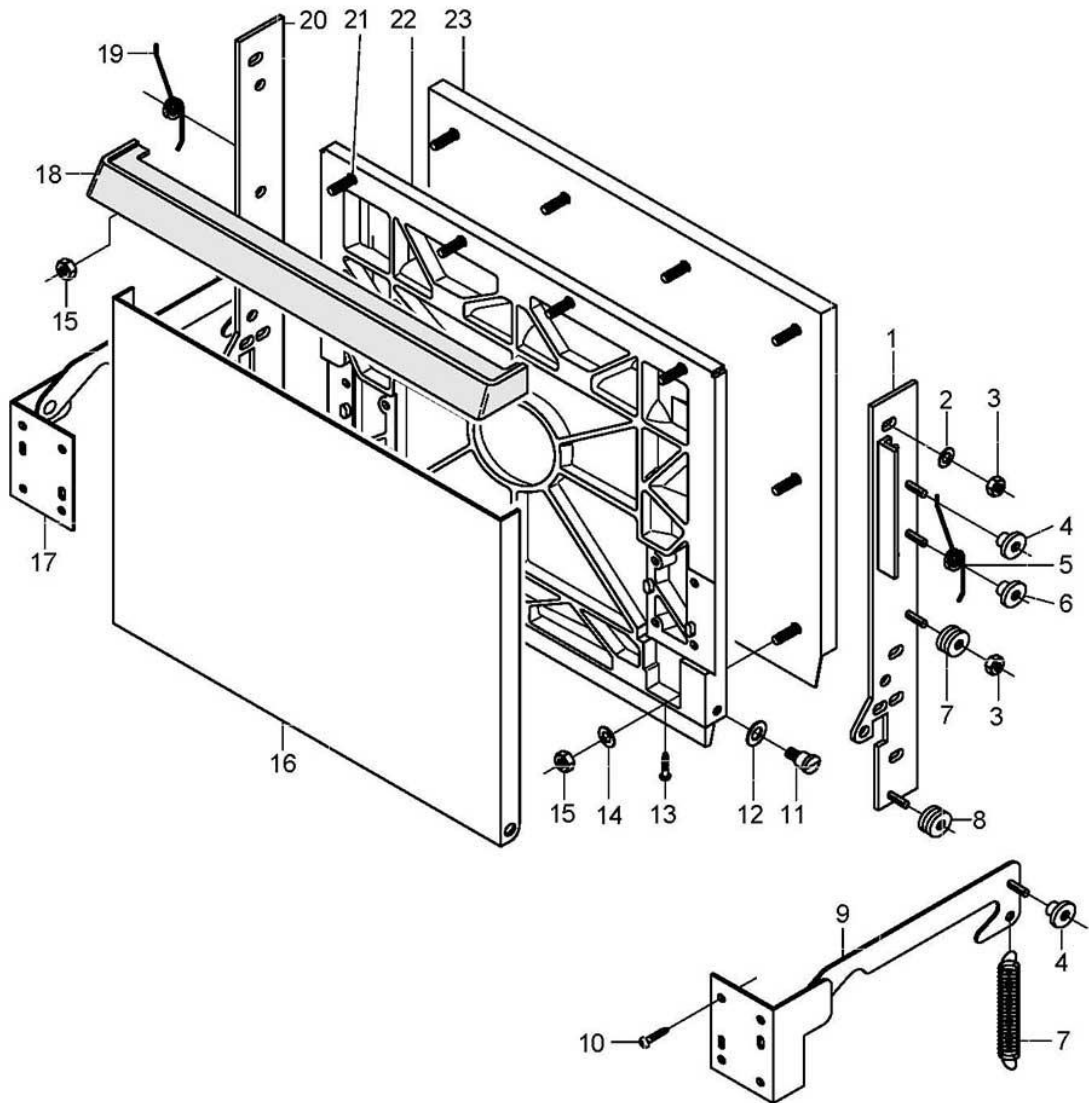
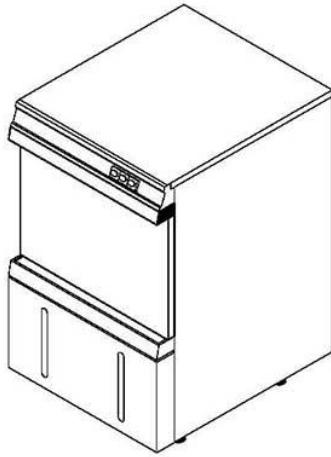
Item.	Designation	Parts no.:	Pc.	Notes
1	Rinse manifold left	62002644		
2	Hose clamp; D12-22 X 9	28 02 105		
3	Hose; DN13 X 4,0; 90	62002066		
4	Distributor for rinse manifold	62001391		
5	Hose elbow 90°; DN13,5X3,5;29,7X219,7	62002068		
6	Hose; DN5 X 1,5	40 01 024		200 mm; "By-the-metre" goods
7	Hose clamp; D8-12 X 9	28 02 102		
8	T-piece; D6,6 X D14 X D14	35 01 087		
9	Hose elbow 75°; DN13,5X3,5;60X92	62002070		
10	Rinse manifold right	62002642		
11	Hose elbow; DN13,5 X 3,5	62001573		adapt
12	Hexagonal nut; G 1/2" X 8,0; SW27	30 09 201		
13	O-ring; 20 X 3,5	27 07 040		
14	Rinse connection	62002831		from mach. no. 340 901 Spare for item 16, 17, 19
15	Industrial hose; DN13 X 3,5	40 02 035		to machine no.: 340 900
16	Angle screwing; G 1/2" X G 1/2"	29 06 238		replaced by Pos. 11, 14
17	Gasket; D13,3 X D18 X 2,0	27 09 012		replaced by Pos. 11, 14
18	Gasket; D21 X D28 X 2,0	27 09 011		replaced by Pos. 11, 14
19	Rinse connecting piece; D30 X 66; G1/2"X G3/8"	62002404		replaced by Pos. 11, 14
20	Double nipple; G 3/8" X 26; SW17	62001484		
21	O-ring; 8 X 1,0	27 07 048		
22	O-ring; 7 X 2,5	27 07 013		
23	Washer; D12 X D14,7 X 1,5	62001658		
24	Coupling nut; G 3/8"; SW22	62001485		
25	Stay pipe f/revolving arm cpl.	62001539		
26	Revolving arm	62001158		incl. item 26.1 - 26.7
26.1	Hexagonal nut; M10 X 1,0 X 5,0; SW14	62001401		
26.2	Revolving arm bearing; G 1/2" X 17,3	62001486		
26.3	Revolving arm bottom part	62001159		
26.4	Sheet metal screw; ST 2,9 X 13	20 20 302		
26.5	Revolving arm upper part	62001160		
26.6	Flat jet nozzle; 1/16 NPT; SW10	29 10 312		
26.7	Threaded stud; M9 X 6	29 10 238		
27	Union nut; G 3/8"; D34 X 15	62001174		
28	Rinse jet cap	65002754		
29	Spray jet swirl	65002755		
30	Rinse jet adapter	62001176		
31	Hexagonal nut; G 3/8" X 5,5; SW22	30 09 200		
32	Gasket; D17 X D24 X 2,0	62001366		



GS 24

Dosage

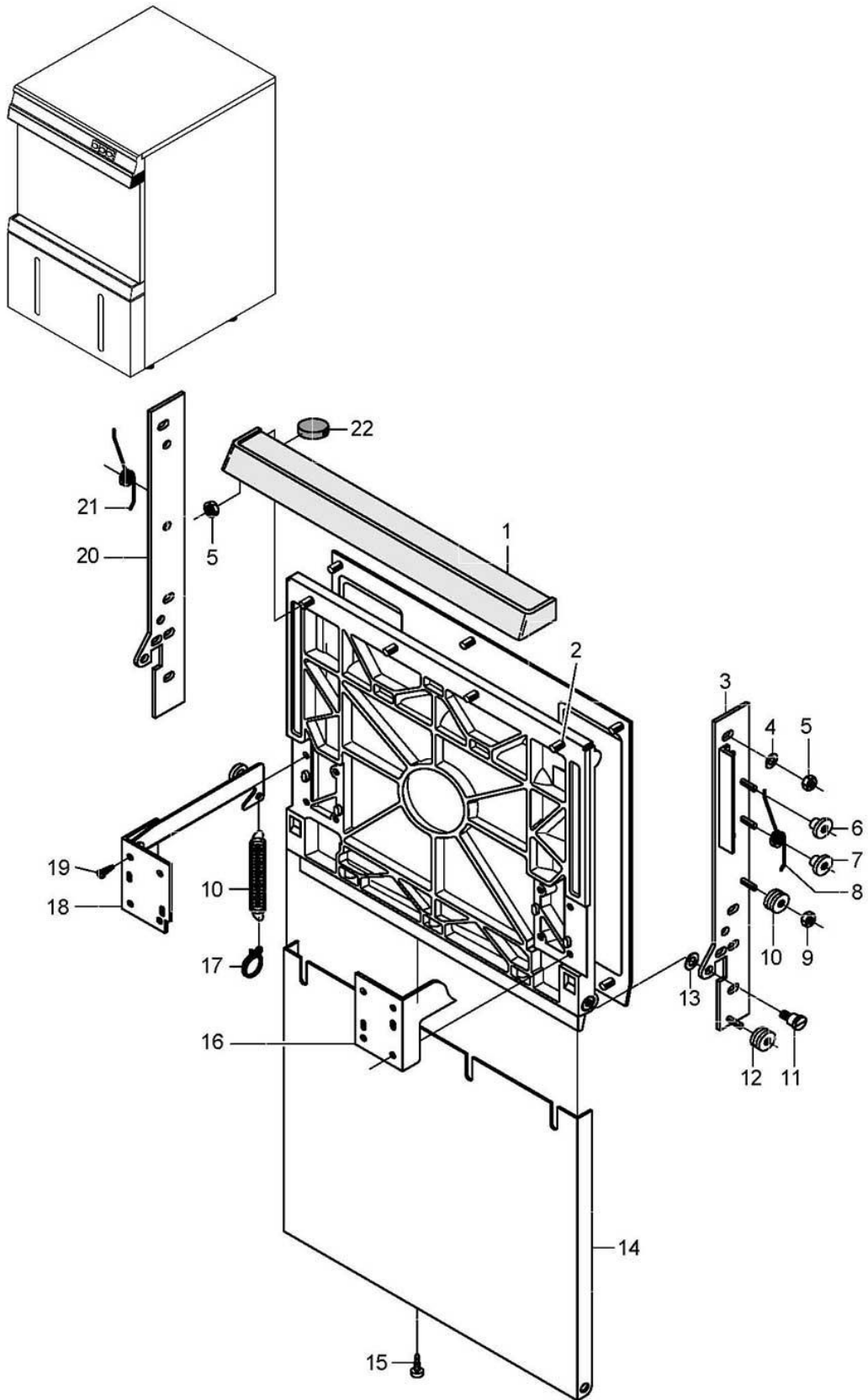
Item.	Designation	Parts no.:	Pc.	Notes
1	Hose; DN5 X 1,5	40 01 024		"By-the-metre" goods
2	Wire hose clamp; D8,6 X 1	28 02 348		
3	ELT 10 replacement set	55 28 278		
4	Dispenser support bracket; 2,0 X 35 X 235	62001314		
5	Hexagonal nut; M5 SELBSTSICHERND	21 05 302		
6	Washer; D5,3 X D12 X 0,8	22 02 313		
7	Hose; DN5 X 1,5	40 01 024		540 mm; "By-the-metre" goods
8	Safety cover; 2,0 X 185 X 428	62001761		
9	Detergent suction pipe; D6 X 1,0 X 486	62001300		
10	Reducing bush; D30 X 25	40 06 011		
11	Detergent container cpl.; 1,8 LITER	62001292		
12	Rinse aid container cpl.; 1,0 LITER	62001304		
13	Filling funnel; 47 X 108 X 2,5; D22	62001331		
14	Suction pipe; D6 X 1,0 X 432,5	62002449		
15	Hose; DN5 X 1,5	40 01 024		600 mm; "By-the-metre" goods
16	Hose; DN5 X 1,5	40 01 024		350 mm; "By-the-metre" goods
17	Detergents dosing nipple set	62002869		incl. item 17.1 – 17.2
17.1	Backup ring; D18 X 5	62002874		
17.2	O-ring; 10 X 2,5	27 07 030		
18	Spring; D0,8 X D110 X 280	62002419		



GS 24

Door to machine no.: 180 734

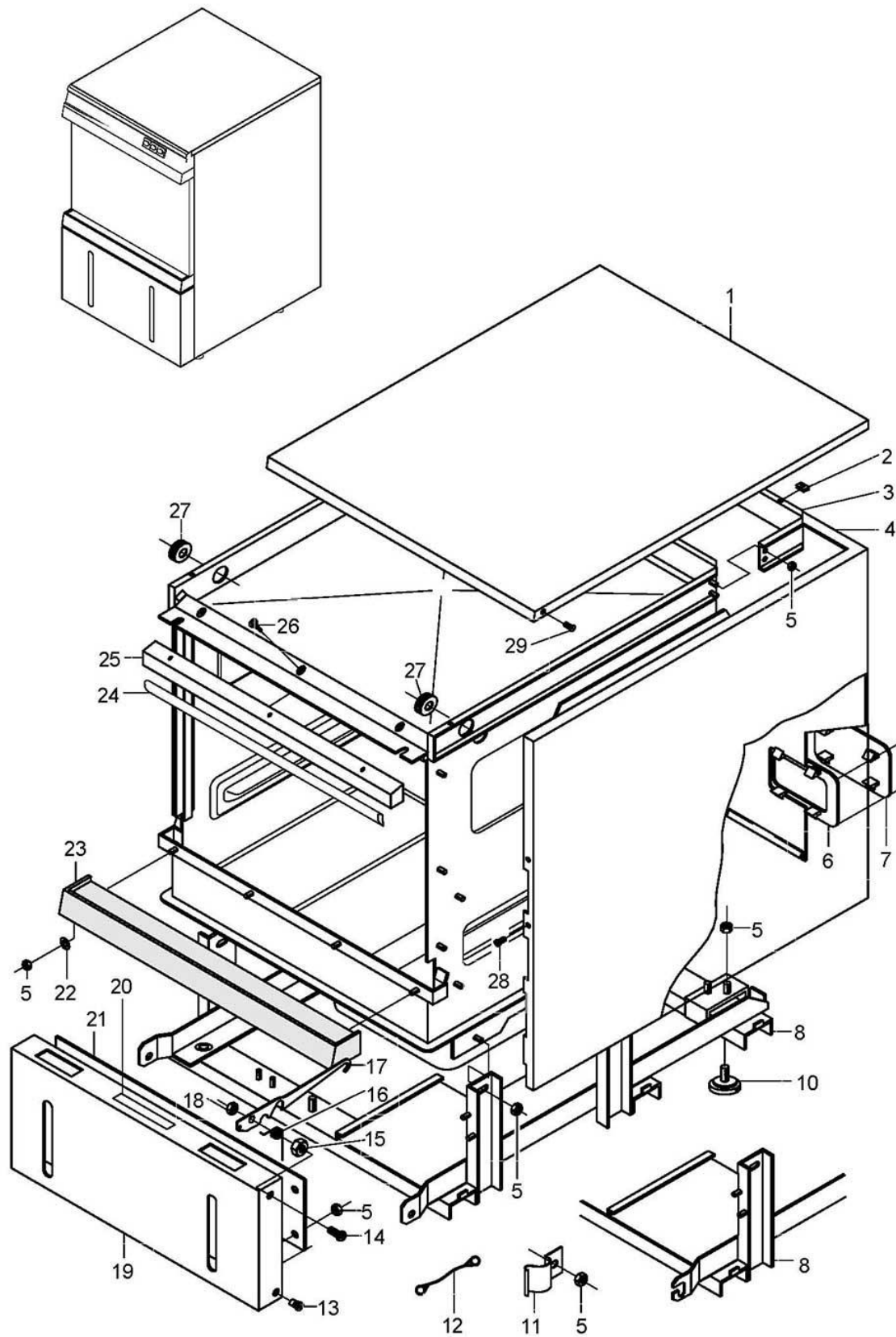
Item.	Designation	Parts no.:	Pc.	Notes
1	Set door suspension gs 24	55 28 168		
1	Set door suspension gs 24	55 28 168		If stud for door lever roller is broken; for both sides
2	Washer; D5,3 X D10 X 1,0	22 01 300		
3	Hexagonal nut; M4 SELBSTSICHERND	21 05 300		
4	Buffer; D20 X 8	62001433		
5	Tension spring right; LO13,95; DA18; D3	62001189		
6	Pivot bearing f/tension spring; D20 X 14	62001191		
7	Set door lever roller gs 24	55 28 192		for both sides
8	Door lever roller; D25,5 X 10,7	62002546		up to mach. no. 231 824 order bush 62002547 too
9	Door brace right cpl.	62001374		
10	PT screw; KB 50 X 16	20 17 301		
11	Door bearing bolt; M8 X 28	62001729		
12	Washer; D6,4 X D12,5 X 1,6	22 01 500		
13	Plate screw; ST 3,9 X 9,5	20 20 307		
14	Washer; D4,3 X D8 X 0,5	22 02 302		
15	Hexagonal nut; M4 SELBSTSICHERND	21 05 300		
16	Outer door panel; 0,8 X 342,4 X 506,6	62001378		to machine no.: 200 672
17	Door brace left cpl	62001373		
18	Door handle	55 15 164		
19	Tension spring left; LO13,95; DA18; D3	62001190		
20	Door suspension left cpl.; 75 X 423	62002890		
20	Set door suspension gs 24	55 28 168		If stud for door lever roller is broken; for both sides
21	Threaded stud; M4 X 16	20 30 306		
22				replaced by 55 28 135
23				replaced by 55 28 135
o.P.	Set door - gs 24	55 28 135		
o.P.	U-profile	62001707		from mach. no. 189 467 up to mach. no. 201 049
o.P.	Bearing bolt; D5 X 15	62001244		



GS 24

Door From machine no.: 180 735

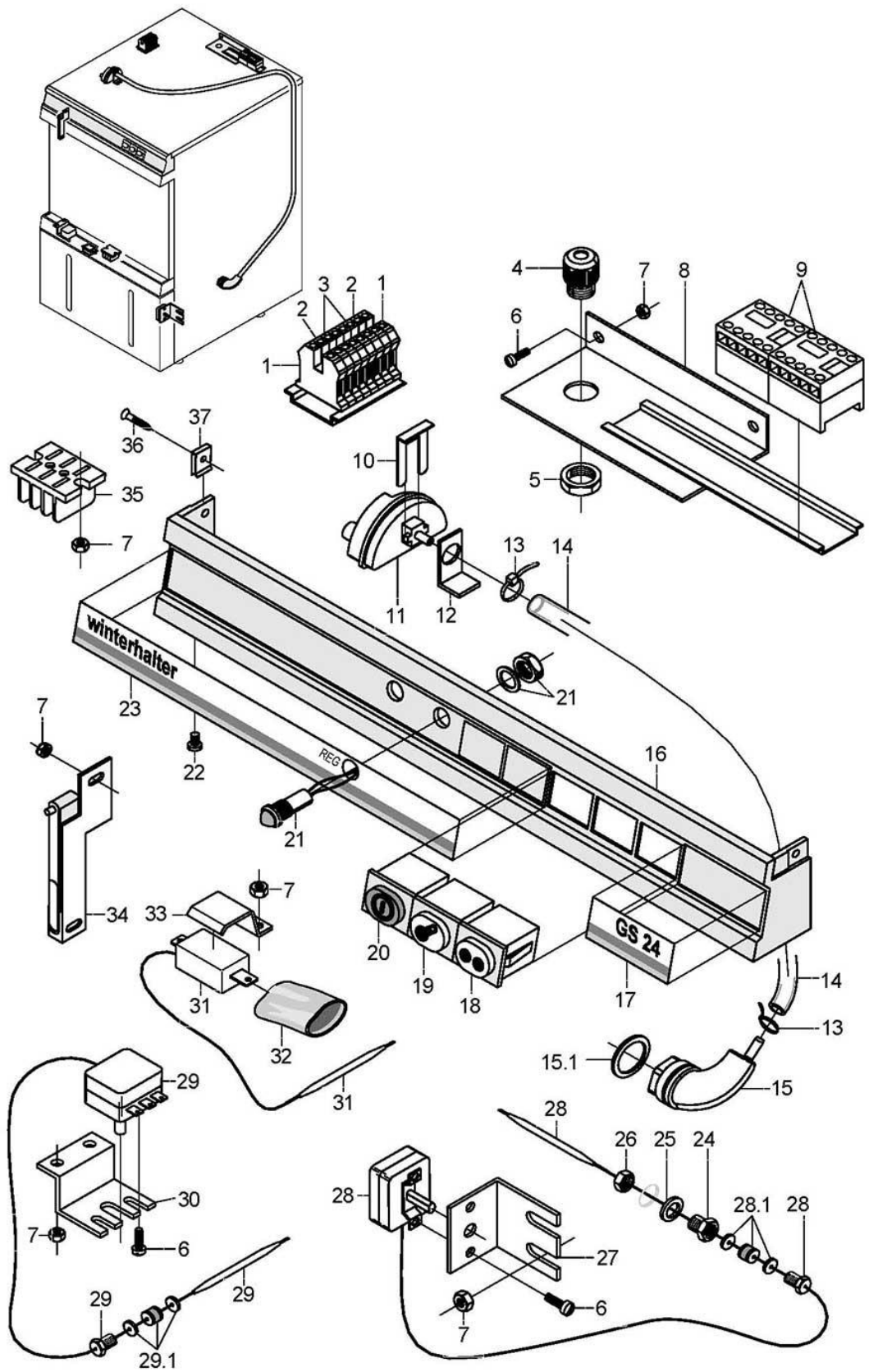
Item.	Designation	Parts no.:	Pc.	Notes
1	Door handle	55 15 164		
2	Threaded stud; M4 X 16	20 30 306		
3	Set door suspension gs 24	55 28 168		If stud for door lever roller is broken; for both sides
3	Set door suspension gs 24	55 28 168		
4	Washer; D5,3 X D10 X 1,0	22 01 300		
5	Hexagonal nut; M4 SELBSTSICHERND	21 05 300		
6	Buffer; D20 X 8	62001433		
7	Pivot bearing f/tension spring; D20 X 14	62001191		
8	Tension spring right; LO13,95; DA18; D3	62001189		
9	Hexagonal nut; M4 SELBSTSICHERND	21 05 300		to machine no.: 351 177
9	Locking disk; D6 X 0,7	23 10 304		From machine no.: 351 178
10	Set door lever roller gs 24	55 28 192		for both sides
11	Door bearing bolt; M8 X 28	62001729		
12	Door lever roller; D25,5 X 10,7	62002546		up to mach. no. 231 824 order bush 62002547 too
13	Washer; D6,4 X D12,5 X 1,6	22 01 500		
14	External door plate; 0,8 X 366,5 X 505,3	62001725		
15	Plate screw; ST 3,9 X 9,5	20 20 307		
16	Door brace right cpl.	62001374		
17	Hose clip; D9 X 1	28 02 133		
18	Door brace left cpl	62001373		
19	PT screw; KB 50 X 16	20 17 301		
20	Door suspension left cpl.; 75 X 423	62002890		If stud for door lever roller is broken; for both sides
20	Set door suspension gs 24	55 28 168		
21	Tension spring left; LO13,95; DA18; D3	62001190		
22	Magnet; D10 X 10	31 24 191		From machine no.: 231 801
o.P.	Door cpl.	62001726		incl. item 1, 2, 5, 14-16, 18, 19



GS 24

Chassis, container and panelling

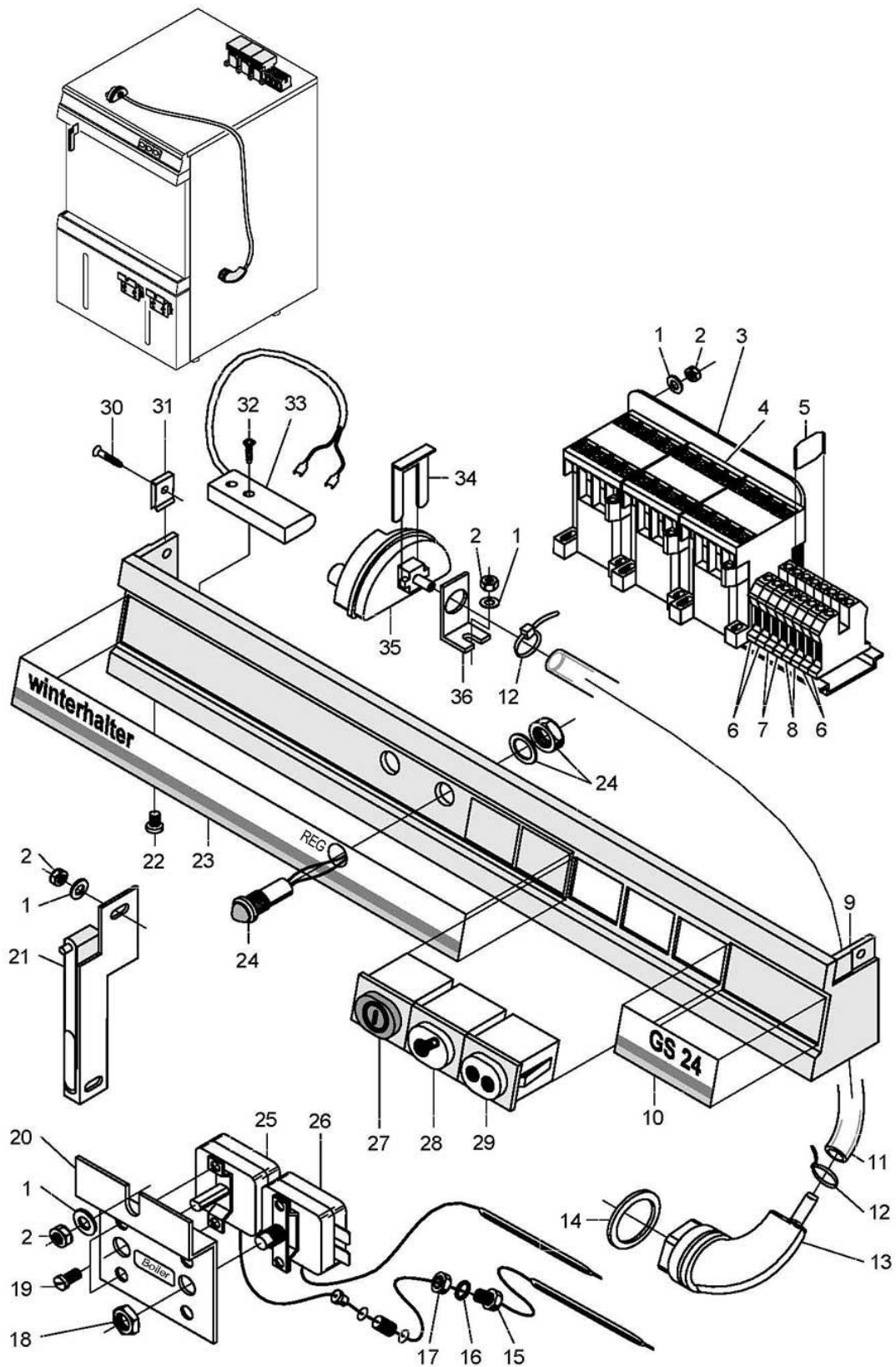
Item.	Designation	Parts no.:	Pc.	Notes
1	Top plate cpl.	62002272		
1	Panel top	62002340		Pressure-independent boiler
2	Sheet metal nut; B 3,9	21 17 002		
3	Frame for housing; 1,0 X 81 X 636	62001464		Pressure-independent boiler
4	Casing outer; 0,8 X 731 X 1542,6	62001305		one part; to machine no.: 231 824
4	Panel; 0,8 X 731 X 1634,6	62002110		one part; Pressure-independent boiler to machine no.: 231 824
4	Housing panel left compl.; 0,8 X 561,5 X 731	62002217		From machine no.: 231 825
4	Panel left cpl.; 0,8 X 607,5 X 731	62002258		From machine no.: 231 825 Pressure-independent boiler
4	Housing panel right; 0,8 X 561,5 X 731	62002218		From machine no.: 231 825
4	Housing panel right; 0,8 X 607,5 X 731	62002259		From machine no.: 231 825 Pressure-independent boiler
4	Rear panel gs 24; 0,8 X 455 X 600	62002219		From machine no.: 231 825
5	Hexagonal nut; M5 SELBSTSICHERND	21 05 302		
6	Edge protection	62001437		
7	Cover	62001404		
8	Base frame	62001271		to machine no.: 231 824
9	Base frame	62002062		From machine no.: 231 825
10	Adjustable foot; M8 X 28, SW24	62002442		
11	Locking spring; 0,5 X 10 X 17 X 76	62002187		From machine no.: 231 825
12	Stabilizer I; D1,0 X 205 +5	28 06 007		From machine no.: 231 825
13	Door bearing bolt; M8 X 28	62001729		to machine no.: 231 824
14	Bearing bolt; M8 X 21	62001461		to machine no.: 231 824
15	Hexagonal nut; M8 SELBSTSICHERND	21 05 306		to machine no.: 231 824
16	Locking spring; 0,5 X 10 X 17 X 76	62002187		to machine no.: 231 824
17	Front panel locking plate; 2,5 X 26 X 299	62001457		to machine no.: 231 824
18	Hexagonal nut; M6 SELBSTSICHERND	21 05 304		to machine no.: 231 824
19	Front panel cpl.	62001290		to machine no.: 231 824
19	Front panel	62001621		From machine no.: 231 825
20	Information sign 'filling'; 0,2 X 35 X 124	62001382		
21	Supporting plate; 1,5 X 100 X 420	62001460		to machine no.: 231 824
22	Washer; D5,3 X D12 X 0,8	22 02 313		
23	Panel for trough; 460 X 53 X 30	62001419		to machine no.: 201 048
23	Door handle/plate for gutter	62001617		From machine no.: 201 049
23	Stainless steel trough; 0,8 X 125 X 563	62002443		From machine no.: 351 504
24	Profile gasket; 10 X 4,0	62001618		450 mm; "By-the-metre" goods
25	Top door frame profile; 18 X 23 X 419	62001270		
26	PT screw, KB 30 X 8	20 17 303		
27	Bushing socket	31 10 105		
29	Countersunk screw, M4 X 12	20 12 315		to machine no.: 342 321
29	Sheet metal screw, ST 3,9 X 13	20 20 310		



GS 24

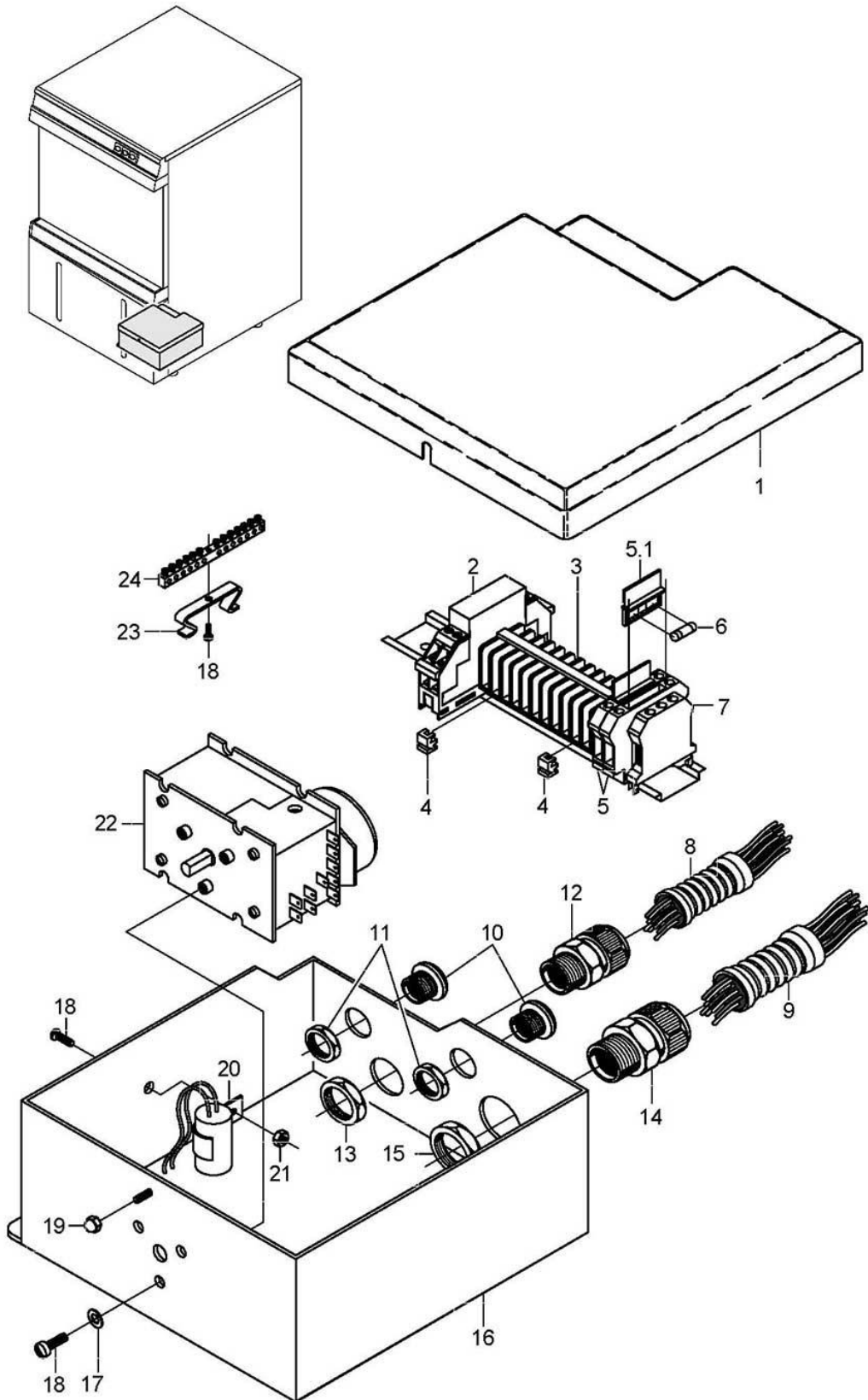
Electrical parts I to machine no.: 215 150

Item.	Designation	Parts no.:	Pc.	Notes
1	Mini earth wire terminal block	31 09 101		green-yellow
2	Mini terminal block grey	31 09 102		grey
3	Mini terminal block blue	31 09 103		blue
4	PG9 cable gland; PG9; 4-8 MM; IP68	31 10 042		
5	Hexagonal nut; PG9	31 10 043		
6	Countersunk screw, M4 X 8	20 10 309		
7	Hexagonal nut; M4	21 01 302		
8	Suspension plate; 1,0 X 82 X 180	62001516		
9	Contacto B7:3H 1 N/C contact; 220-255V/50-60HZ	31 04 154		
9	Contacto B7:3H 1 N/C contact; 200V/50-60HZ	31 04 171		Japan
10	Retaining spring for leveller	31 26 001		
11	Level control; 250V/50-60HZ	31 26 029		
12	Support bracket f/level switch; 1,0 X 30 X 54	62001350		
13	Wire hose clamp; D8,6 X 1	28 02 348		
14	Hose; DN5 X 1,5	40 01 024		1540 mm; "By-the-metre" goods
15	Air chamber	55 04 030		incl. item 15.1
15.1	Gasket; D26 X D36 X 2,0	27 01 003		
16	Screen	55 19 101		incl. item 17, 23, 36, 37
17	Type plate gs 24; 0,4 X 25 X 76,5	28 03 267		
18	Pressure key "Programme II"; 250V; AC; 1-POL; IP54	31 24 130		
19	Lamp with extinction resistor; 230V; IP54	31 08 116		
20	Pressure switch "ON/OFF" - "H"; 250V; AC; 2-POL; IP54	31 24 185		
21	LED red; 12V; 30MA	31 08 111		REG
21	LED yellow; 12V; 30MA	31 08 112		DOS
22	Raised head screw, M4 X 8	20 10 310		
23	Plate "winterhalter"; 0,4 X 25 X 274,5	28 03 266		without hole
23	Plate "winterhalter"; 0,4 X 25 X 274,5	62001652		REG DOS
23	Plate "winterhalter"; 0,4 X 25 X 274,5	62002409		REG
24	Gland for thermostat; M14 X 1,0 X 15; SW19	31 25 001		für thermostat tank
25	Gasket; D14,2 X D20 X 2,0	27 09 036		für thermostat tank
26	Hexagonal nut; M14 X 1,0 X 5,0	31 25 002		für thermostat tank
27	Thermostat bracket; 1,5 X 38 X 40	62001372		Tank
28	Thermostat; FÜHLER 173 MM	31 25 023		Tank
28.1	Gland screwing	31 25 012		
29	Thermostat; 1750 LG	31 25 010		boiler
29.1	Gland screwing	31 25 012		
30	Thermostat bracket; 1,25 X 40 X 80	62001285		boiler
31	Safety thermostat; 98+/-4 GRAD AUS	31 25 022		
32	Flexible insulating tubing; DN25	31 14 025		
33	Support for safety thermostat; 48 X 52	62001583		
34	Door limit switch cpl.; BOLZEN: D5 X 12	62001349		From machine no.: 201 048 to machine no.: 231 800
34	Door limit switch cpl.; BOLZEN: D5 X 23	62002770		to machine no.: 201 048
35	Distribution bar; 3-POLIG	31 09 011		
36	Sheet metal screw; ST 3,9 X 13	20 20 310		
37	Sheet metal nut; B 3,9	21 17 303		



GS 24**Electrical parts I From machine no.: 215 151**

Item.	Designation	Parts no.:	Pc.	Notes
1	Washer; D5,3 X D12 X 0,8	22 02 313		
2	Hexagonal nut; M5 SELBSTSICHERND	21 05 302		
3	Snap-on rail; 305 LG	62001753		
4	Contacteur B7:3H 1 N/C contact; 220-255V/50-60HZ	31 04 154		
4	Contacteur B7:3H 1 N/C contact; 200V/50-60HZ	31 04 171		Japan
5	Isolating disk	31 09 066		
6	Protective conductor terminal USKLG 5	31 09 064		
7	Universal terminal grey	31 09 049		
8	Universal terminal blue	31 09 050		
9	Screen	55 19 101		incl. item 10, 23, 30, 31
10	Type plate gs 24; 0,4 X 25 X 76,5	28 03 267		
11	Hose; DN5 X 1,5	40 01 024		
12	Wire hose clamp; D8,6 X 1	28 02 348		
13	Air chamber	55 04 030		
14	Gasket; D26 X D36 X 2,0	27 01 003		
15	Gland for thermostat; M14 X 1,0 X 15; SW19	31 25 001		
16	Gasket; D14,2 X D20 X 2,0	27 09 036		
17	Hexagonal nut; M14 X 1,0 X 5,0	31 25 002		
18	Hexagonal nut; M8 SELBSTSICHERND	21 05 306		
19	Countersunk screw; M4 X 8	20 10 309		
20	Thermostat bracket; 1,0 X 56 X 62	62001741		
21	Door limit switch cpl.; BOLZEN: D5 X 12	62001349		From machine no.: 201 048 to machine no.: 231 800
21	Door limit switch cpl.; BOLZEN: D5 X 23	62002770		to machine no.: 201 048
22	Raised head screw; M4 X 8	20 10 310		
23	Plate "winterhalter"; 0,4 X 25 X 274,5	28 03 266		without hole
23	Plate "winterhalter"; 0,4 X 25 X 274,5	62002409		REG
23	Plate "winterhalter"; 0,4 X 25 X 274,5	62001652		REG DOS
24	LED red; 12V; 30MA	31 08 111		REG
24	LED yellow; 12V; 30MA	31 08 112		DOS
25	Thermostat; 1750 LG; 220V	31 25 031		
26	Safety thermostat; 160 GRAD C -12K "AUS"	31 25 030		
27	Pressure switch "ON/OFF" - "H"; 250V; AC; 2-POL; IP54	31 24 185		
28	Lamp with extinction resistor; 230V; IP54	31 08 116		
29	Pressure key "Programme II"; 250V; AC; 1-POL; IP54	31 24 130		
30	Sheet metal screw; ST 3,9 X 13	20 20 310		
31	Sheet metal nut; B 3,9	21 17 303		
32	PT screw; KB 50 X 10	20 17 304		From machine no.: 231 801
33	Magnetic switch; 180-265V AC 50/60HZ	31 24 221		From machine no.: 231 801
34	Retaining spring for leveller	31 26 001		
35	Level control; 250V/50-60HZ	31 26 029		
36	Support bracket f/level switch; 1,0 X 30 X 54	62001350		
o.P.	Supply cable, 5-wire; 5 X 2,5QMM; 3000 LG	31 23 132		
o.P.	Supply cable, 3-wire; 3 X 2,5QMM; 3000 LG	31 23 125		

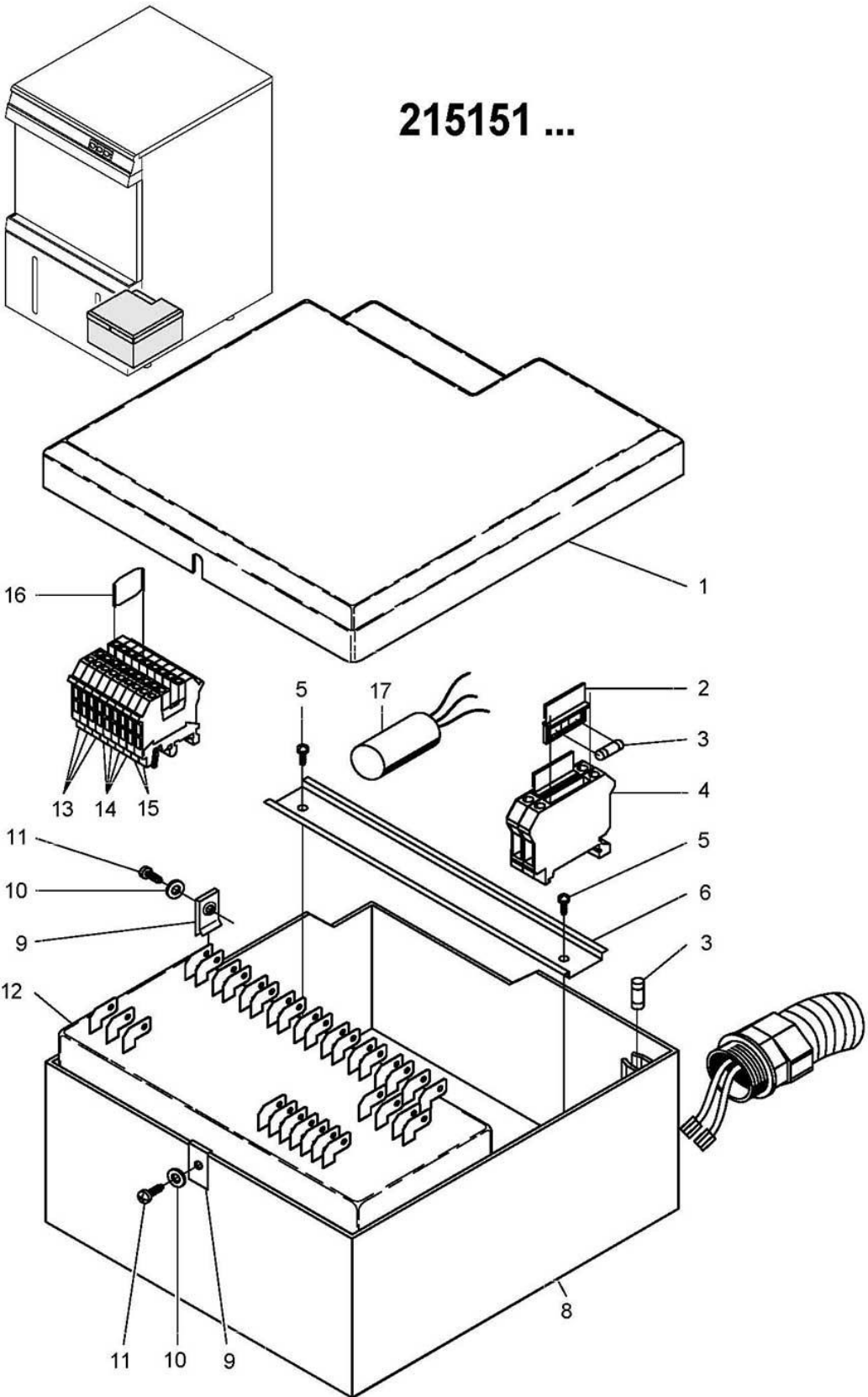


GS 24

Electrical parts II to machine no.: 215 150

Item.	Designation	Parts no.:	Pc.	Notes
1	Electric box cover; 22 X 172,5 X 194,5	62001792		
2	Pulsing relay; 220-240V; 1-10SEC	31 04 117		to machine no.: 203 500
3	Terminal strip 11-fold	55 19 072		
4	Retaining clips	31 09 012		
5	Universal fuse clip	31 09 063		
5.1	Securing plug	31 09 072		
6	Fine fuse, medium time lag; 250V; 6,3A; 5 X 20	31 11 043		
6	Fine fuse, medium time lag; 250V; 0,16A	31 11 044		
7	Protective conductor terminal USKLG 5	31 09 064		
8	Wiring loom cpl.	62000139		
9	Wiring loom cpl.	62000140		Control panel
10	Hexagon bolt; PG9	31 10 021		
11	Hexagonal nut; PG9	31 10 043		
12	Hex nut; PG29	31 10 047		
13	Hexagonal nut; PG16; SW30;	31 10 110		
14	Cable gland; PG21; 10-18 MM; IP68	31 10 070		
15	Hexagonal nut; PG21	31 10 071		
16	Relay box bottom part; 190 X 168 X 70	62001791		From machine no.: 204 833
17	Washer; D4,3 X D8 X 0,5	22 02 302		
18	Raised head screw; M4 X 8	20 10 310		
19	Cap nut; M5	21 10 303		
20	Radio interference suppression capacitor; 0,1 + 2 X 0,01 MIKRO F	31 13 071		
21	Hexagonal nut; M4	21 01 302		
22	Programme switch; 230V/50HZ	31 05 100		to machine no.: 203 500
22	Programme switch EPS1.1; 230V/50-60HZ	31 05 131		From machine no.: 203 501
22	Programme switch EPS1.1 V2.0; 200V/240V 50-60HZ	31 05 132		From machine no.: 203 501
23	Catch spring; D3,5	31 20 010		
24	Earth terminal bar	31 09 094		

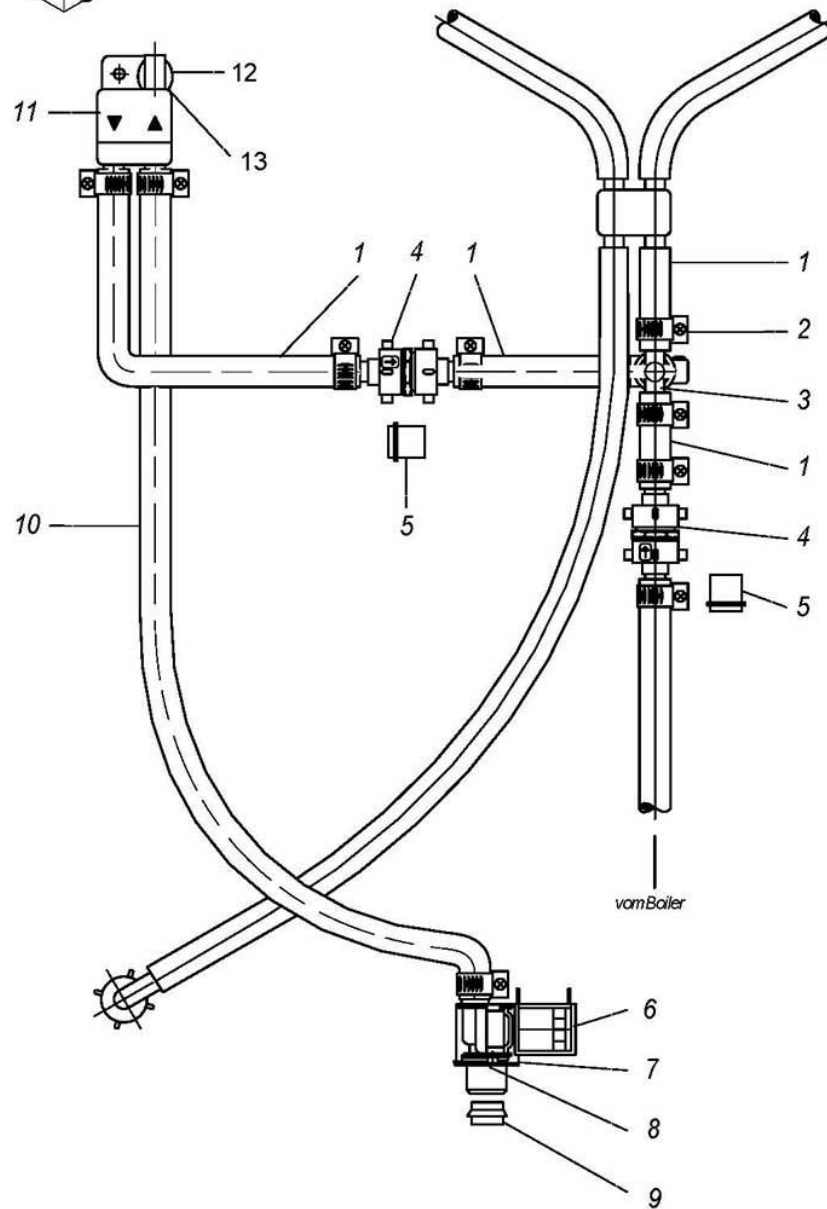
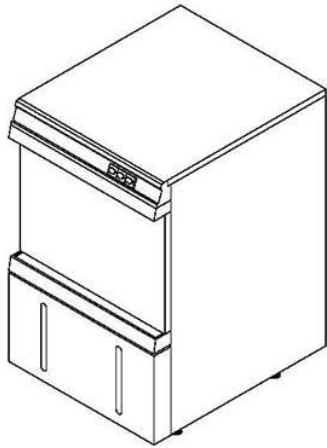
215151 ...



GS 24

Electrical parts II From machine no.: 215 151

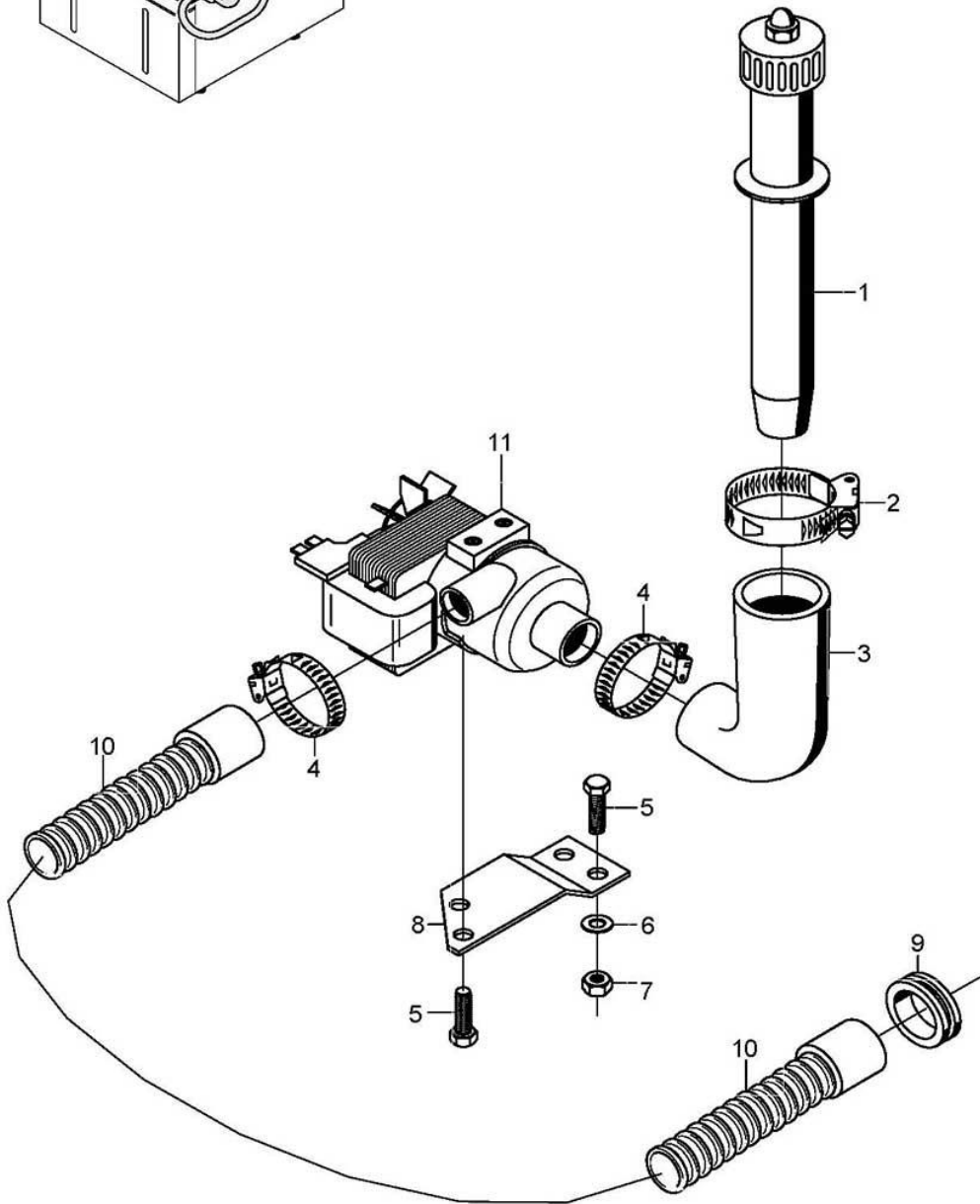
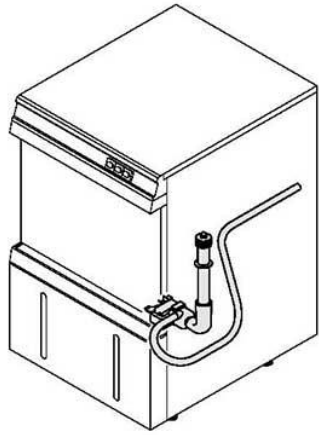
Item.	Designation	Parts no.:	Pc.	Notes
1	Electric box cover; 22 X 172,5 X 194,5	62001792		
2	Securing plug	31 09 072		
3	Fine fuse, medium time lag; 250V; 6,3A; 5 X 20	31 11 043		
4	Universal fuse clip	31 09 063		
5	PT screw; KB 50 X 10	20 17 304		
6	Snap-on rail; 7,5 X 35 X 162	62001772		
8	Relay box bottom part; 190 X 168 X 70	62001791		
9	Sheet metal nut; B 3,9	21 17 300		
10	Washer; D4,3 X D12 X 1,0	22 05 300		
11	Sheet metal screw; ST 3,5 X 13	20 20 304		
12	Programme switch EPS1.1; 230V/50-60HZ	31 05 131		
12	Programme switch EPS1.1 V2.0; 200V/240V 50-60HZ	31 05 132		
13	Double terminal, UK, 5-Twin	31 09 115		grey
14	Twin-clamp insulator blue	31 09 164		
15	Double terminal, UK, 5-Twin-PE	31 09 165		
16	Isolating disk	31 09 066		
17	Radio interference suppression capacitor; 0,1 + 2 X 0,01 MIKRO F	31 13 071		to machine no.: 231 800
17	Radio interference suppression capacitor; 0,27MF + 2 X 27000PF	31 13 078		From machine no.: 231 801
o.P.	Plate "lightning arrow"; 0,1 X 22 X 22	28 03 009		
o.P.	Additional wires for relay box	62002392		From machine no.: 231 801
o.P.	Wire assortment relay box	62001760		to machine no.: 231 800
o.P.	Clock unit; AC 220-240V	31 04 152		impulse filling
o.P.	Wire assortment pulse controlled filling; 0,75QM	62002846		impulse filling



GS 24

Cold water rinsing

Item.	Designation	Parts no.:	Pc.	Notes
1	Hose elbow 90°; DN12,5X4,0;45X880	62001434		adapt
2	Hose clamp; D12-22 X 9	28 02 105		
3	Hose T-connecting piece; D15 X D15 X D15	70010598		
4	Back flow preventer	80000811		
5	Check valve; DW 20	29 01 512		
6	Solenoid valve flow restrictor 15l; 220-240V/50-60HZ	31 06 180		
6	Double solenoid valve; 220-240V/50-60HZ	31 06 182		
7	Solenoid valve bracket; 1,25 X 75,5 X 133	62001439		
8	Countersunk screw, M4 X 8	20 10 309		
9	Flow control; 15 L/MIN; VIOLETT	31 06 129		
10	Hose elbow 90°; DN12,5X4,0;34,7X779,7	80000810		
11	Lateral check valve	35 01 194		
12	Tank inlet set	61004545		
13	Gasket; D17 X D24 X 2,0	62001366		
o.P.	Wire assortment	80000812		
o.P.	Pressure key "manual rinsing"; 250V; AC; 2-POL; IP54	31 24 129		
o.P.	Thermostat stop	80001654		
o.P.	Cold water rinsing	80000808		



GS 24

Drain pump (optional)

Item.	Designation	Parts no.:	Pc.	Notes
1	Stand pipe; ÜBERLAUFHÖHE 131	80001537		
2	Hose clamp; D32-52 X 12	28 02 110		
3	Reducing elbow; DN24 X DN36	40 03 043		
4	Hose clamp; D24-36 X 12	28 02 111		
5	Hexagon screw, M6 X 16; A70	20 01 306		
6	Washer; D6,4 X D12,5 X 1,6	22 01 302		
7	Hexagonal nut; M6	21 01 304		
8	Z-profile; 2,0 X 37 X 120,5	80000731		
9	Sleeve; 35 X 60 X 10	40 07 014		
10	Drain hose; 1500 LG	40 01 039		
11	Drain pump; 220-240V/50HZ	31 02 010		
o.P.	Cable drain pump; 3 X 0,75QMM	62001597		
o.P.	Cable tie; 200 X 4,7	31 20 015		
o.P.	PG9 cable gland; PG9; 4-8 MM; IP68	31 10 042		
o.P.	Hexagonal nut; PG9	31 10 043		